

105*153MM

TUBULAR LATCH

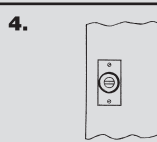
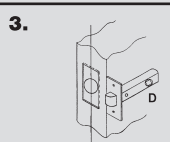
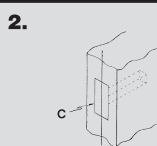
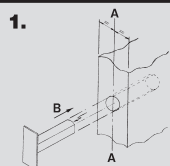
CONFORMS TO REQUIREMENTS OF NHBC.

FEATURES INCLUDE

- BRASS LATCH BOLT
- FINISH: LACQUERED BRASS
- DO NOT USE WITH UNSPRUNG LEVER HANDLES

LOCKMAKERS SINCE 1881
Legge[®]
Security Products

FOUR EASY FIT STEPS



TOOLS REQUIRED

- PENCIL
- TAPE MEASURE
- 16, 19 & 22mm DRILLS
- HAMMER
- PZ2 SCREWDRIVER
- 16mm CHISEL

COMPLEMENTARY PRODUCTS

- REBATE CONVERSION KIT No.21 FOR USE ON 1/2 REBATED DOORS



Manufactured by
Allegion (UK) Ltd
35 Rocky Lane, Aston
Birmingham B6 5RQ, UK
Tel: +44 (0) 330 8080 617
Technical: +44 (0) 800 834102

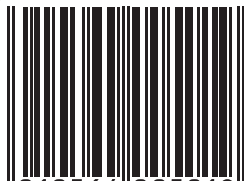


EU Authorised Representative
Allegion Lux Financing III Sàrl
26 Boulevard Royal
L-2449 Luxembourg

Made in China

HC115

P 3721 PB



5 010564 005019 >

ALLEGION 

P3721 PB

TUBULAR LATCH

- SUITABLE FOR INTERNAL DOORS
- FOR RIGHT AND LEFT HAND OPENING DOORS
- EASY FIT INSTRUCTIONS
- FIRE RATED

LOCKMAKERS SINCE 1881
Legge[®]
Security Products

UK
CA
CE



THIS DOES NOT
AFFECT YOUR
STATUTORY RIGHTS

P3721 PB 64mm (2 1/2")