



2320 & 2720 Series

Surface mounted door co-ordinator

Mounted in conjunction with cam action door closers, 2320 or 2720. The door co-ordinator controls the closing sequence of rebated double doors.

The unit is suitable for double doors with a combined leaf width of 1350mm to 2500mm (hinge centre to hinge centre).



Mounting	EN power	Max. opening	CE Classification
Door mount pull side	3-5	180°	3 8 3/5 1 1 3

Certification

- CE marked to EN 1158 (AF5003)
- Fire tested to EN 1634 for use on timber fire doors up to 2 hour rating
- DoP available at www.britondops.co.uk

Features & Functions

- Compatible with Briton 2320 and Briton 2720 cam action door closers
- For use on door mounted pull side applications only
- Suitable for left and right hand doors
- Suitable for closers with EN power sizes 3 - 5
- Allows full 180° opening angle
- Fulfills the barrier free access requirements of BS 8300
- Suitable for door leaf widths from 1350 to 2500mm (hinge centre to hinge centre) Site adjustable
- Cover caps conceal joints of the co-ordinator track
- Available in SES and SS finishes
- Supplied complete with carry bar



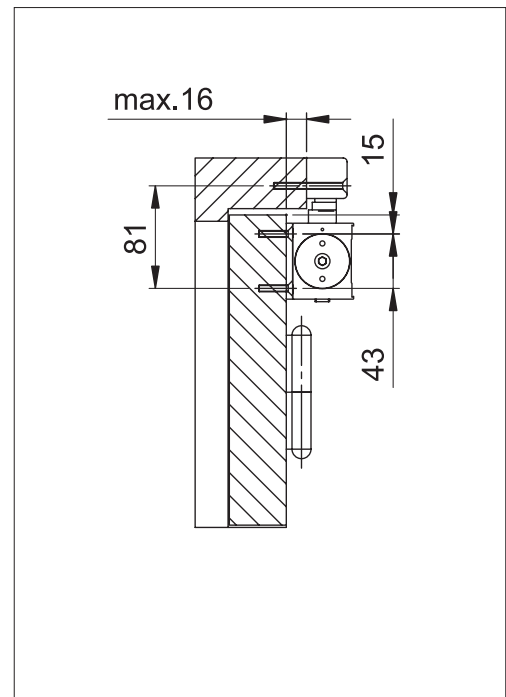
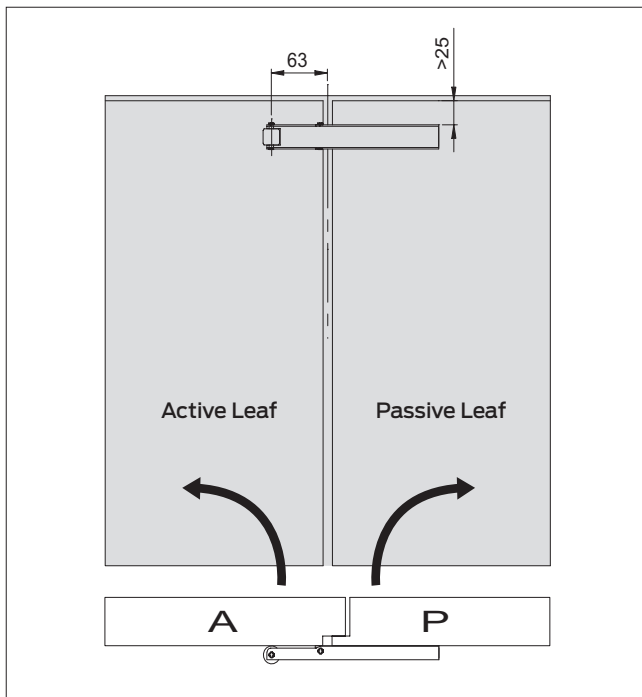
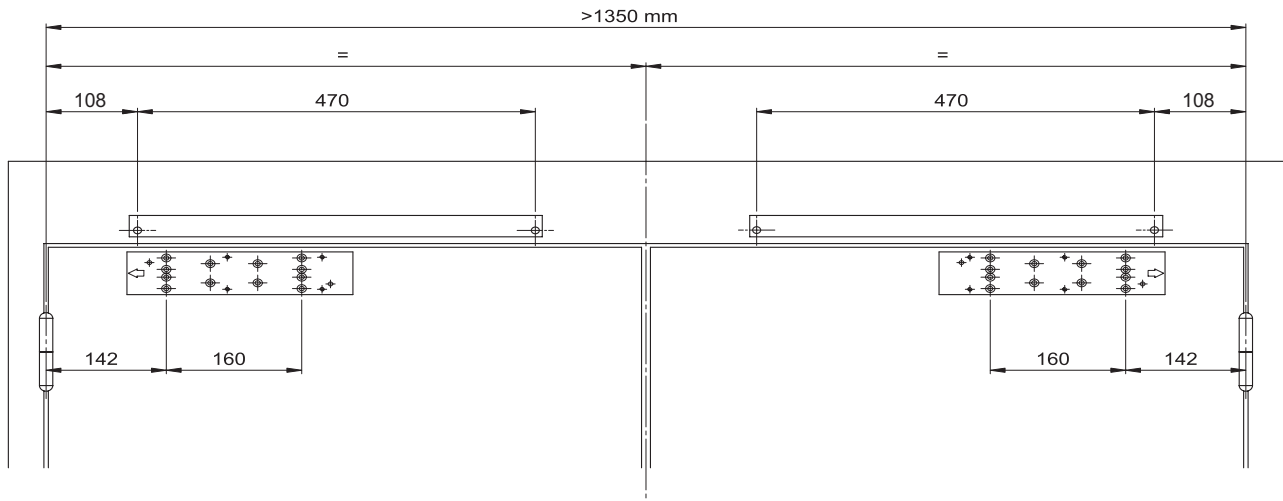
NOTE: Carry bar must be fitted to ensure the correct closing sequence and to maintain certification (see overleaf).

Ref:	Description	Finish
6100999	Surface mounted double door co-ordinator 1350-2500 x 32.5 x 32	SES:SS

Briton

2320 & 2720 Series

Surface mounted door co-ordinator



The carry bar is fitted to the passive leaf on the push side of the door. If the passive leaf is opened first it ensures that the active leaf is partially opened to enable the passive leaf to re-close first.

ALLEGION 

Allegion (UK) Limited
35 Rocky Lane, Aston, Birmingham B6 5RQ

Tel: +44 (0) 121 380 2400
Email: inspec@allegion.com