



ALLEGION™

# INSTALLATION INSTRUCTIONS

## REVERSING THE HAND OF

### MORTICE PANIC LATCH OPERATOR

0379/016/00  
Issue 02

This Panic Latch Operator is suitable for a single leaf, single swing RIGHT HAND door.

To convert it for use as a LEFT HAND follow the simple instructions below.



Diagram 1

**Note.** The hand of the unit is shown on the hub of the follower on the back of the operator.

1. Remove the backplate screws 'A' and 'B'.
2. Carefully lift backplate out of case and place thumb on slide at point 'C'. This is to prevent the slide and the slide spring from jumping out.
3. Lift out follower and turn it over so that the symbol of the hand required is uppermost. Ensure that the lower hub is engaged in the bearing in the case.
4. Carefully replace backplate ensuring that the follower hub and the square pad on the slide are engaged in their respective backplate openings.
5. Replace the backplate screws 'A' and 'B'.

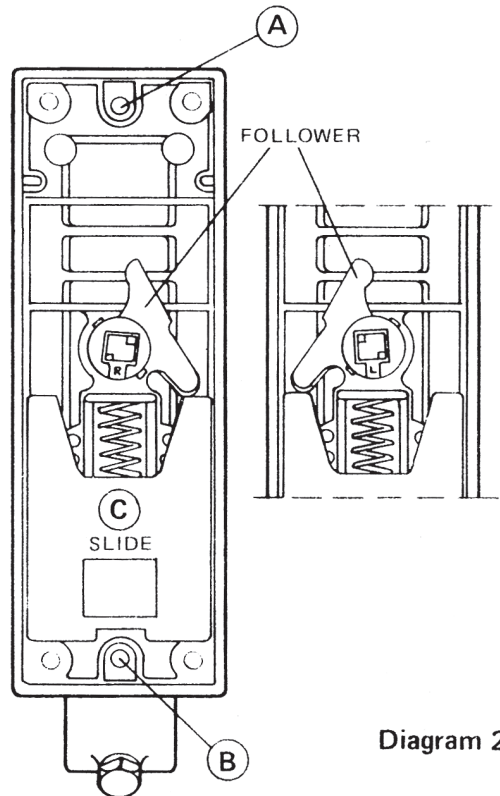


Diagram 2

VIEW WITH BACKPLATE  
REMOVED