



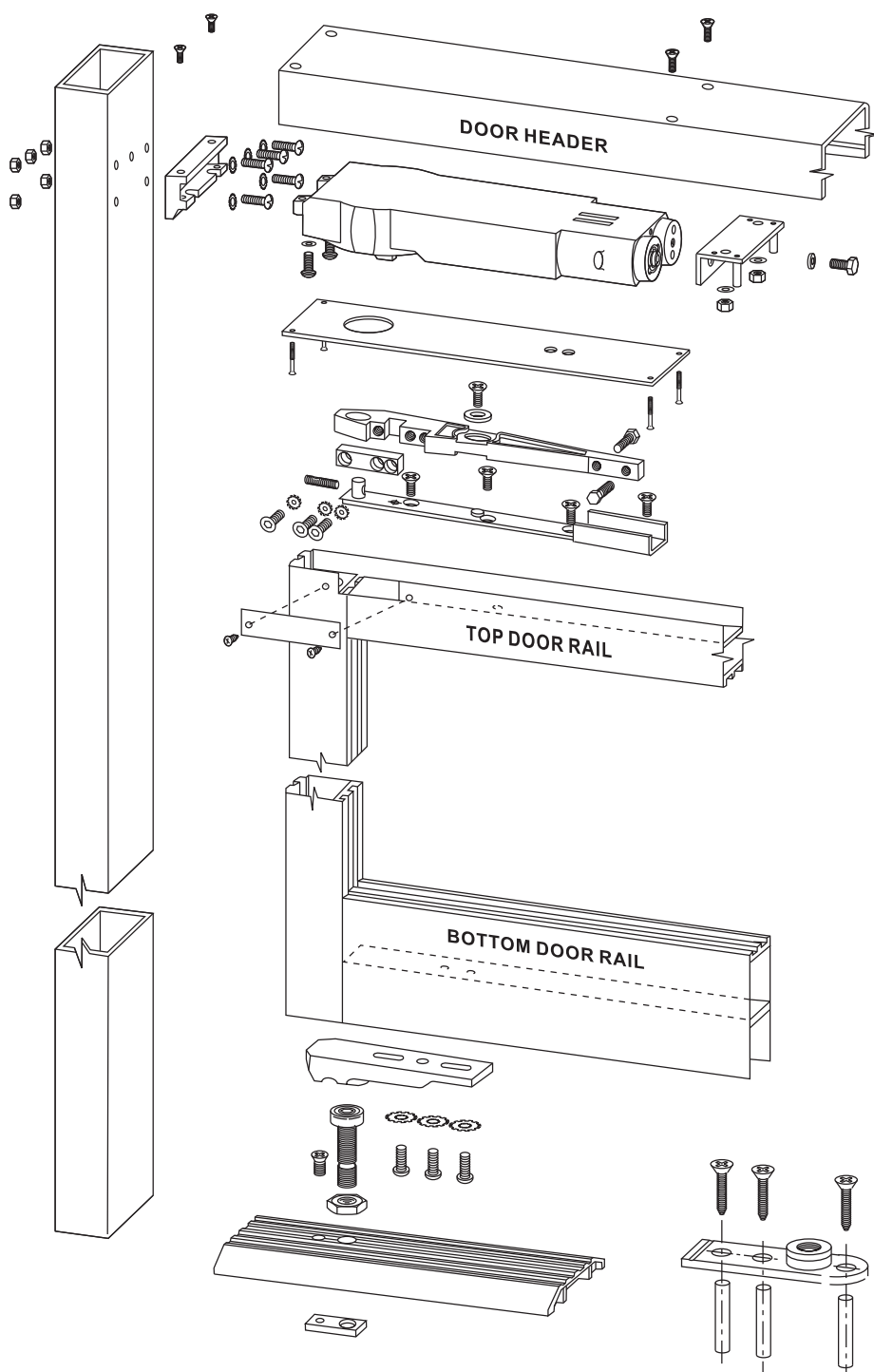
ALLEGION™

# SIZE 2-4 ADJUSTABLE OVERHEAD CONCEALED DOOR CLOSER FOR METAL APPLICATIONS

DOUBLE OR SINGLE ACTING, CENTRE PIVOTED FOR SIDE LOAD AND END LOAD APPLICATIONS

MAXIMUM ANGLE OF OPENING 130° SUBJECT TO SURROUNDING STRUCTURE

**MAINTENANCE (Quarterly)** Check to ensure correct setting of closing and latching speeds and that alignment and fixing screws are tight.



## IMPORTANT

NO responsibility can be accepted by the manufacturers if these installation instructions are disregarded.

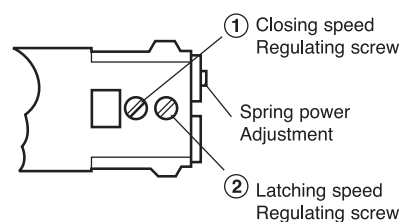
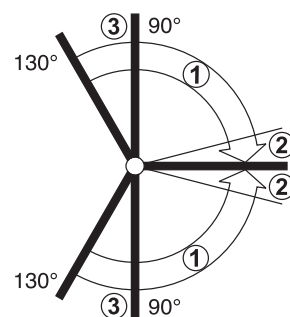
After closer is installed into the DOOR HEADER, do not drill in this area for it may damage closer.

## PROPOSAL for DOOR CLEARANCE

Both of door stile	3mm
Top door rail	3mm
Bottom door rail	4.8mm

## SPEED ADJUSTMENTS

- ① CLOSING RANGE
- ② LATCHING RANGE
- ③ HOLD OPEN ANGLE  
(Hold Open Units Only)



## Speed Adjustment



FASTER



SLOWER

Max. 2 turns in either direction

# SIDE-LOAD, 70mm PIVOT POINT

## DOOR, TOP RAIL

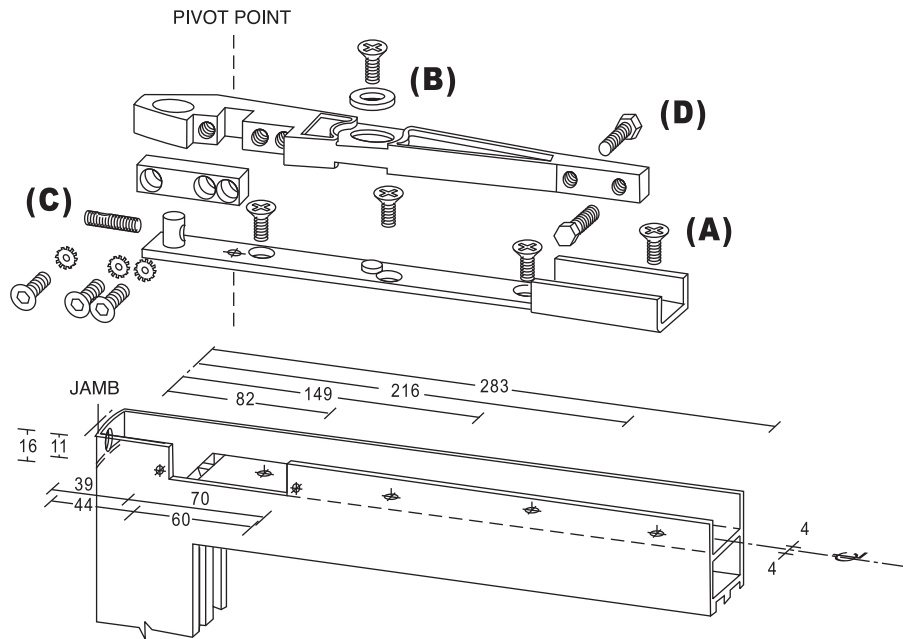
Prepare top rail of door as detailed, ensuring that internal door face is cut away to give access to spindle during door hanging and hole to be drilled in heel of door to give access to adjustment screw (C).

\*Fix arm channel to top rail with 4 No. M6 csk screws (A). Insert arm into channel and secure with M6 csk socket head screws (B).

Insert M6 socket head alignment bolt, washer and locknut (C) into arm through slot in end of channel.

Adjust alignment bolts (D) onto side of channel.

\***Note:** Datum hole indicating pivot point



## BOTTOM RAIL

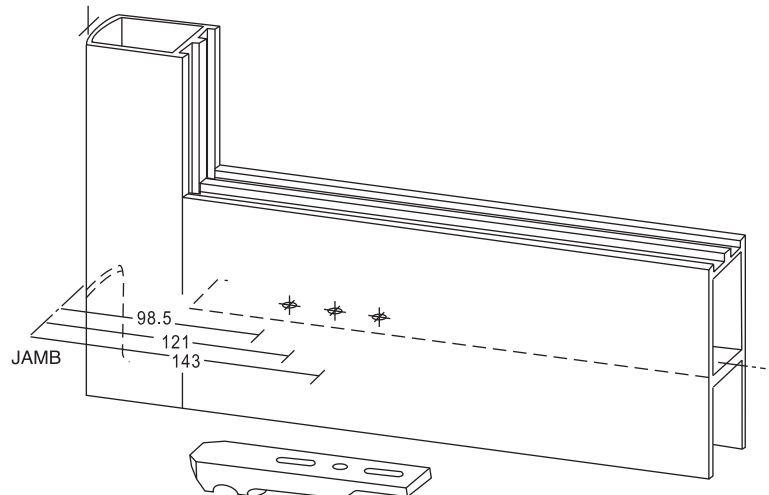
Prepare bottom rail of door as detailed.

Secure door plate of bottom pivot assembly to bottom rail of door with 2 No. M6 X 16mm long set screws and shakeproof washers (E) using only the slotted holes.

Check that projection of the bearing plate beyond the heel of the door gives the working clearance required.

Slacken the 2 fixed set screws and adjust if necessary.

Finally drill and tap bottom rail for 3rd M6 X 16mm long set screw and fix screw to maintain this position. Tighten all screws.

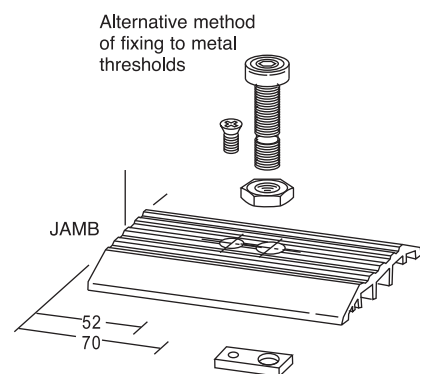
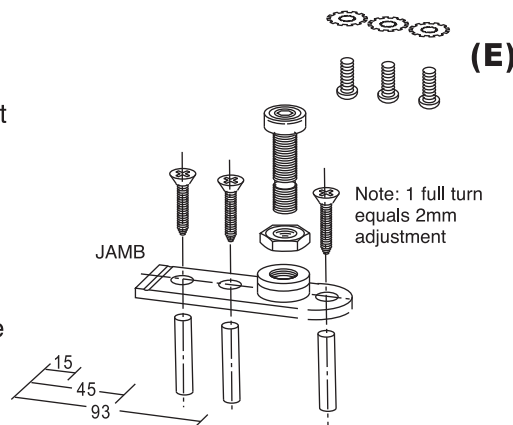


## FLOOR PIVOT

Determine overall height of bottom pivot assembly, allowing desired clearance, and secure with locknut.

Cut off excess thread flush with underside of plate or recess flooring to accommodate.

Fix bearing plate on to the floor with the extended end against the face of the jamb.



## TO ERECT THE DOOR

Holding door at an angle of approx. 15°, lower on to bearing plate pivot and gradually swing door vertical until arm recess in top of door locates against closer spindle.

**Note:** To ease the hanging of single action doors, temporarily remove head stop if possible.

Wedge door in the vertical position whilst spindle clamping block is located against spindle and securely tighten clamping screws using wrench key provided.

(Max. tightness can be obtained by using the palm of the hand against the wrench key).

Fit (cut out) cover plate.

Check that door closes to a position that aligns with door frame or adjacent door leaf. Any correction is obtained by adjusting alignment bolts (D) and alignment screw (C).

# SIDE-LOAD, 70mm PIVOT POINT

## DOOR, TOP RAIL

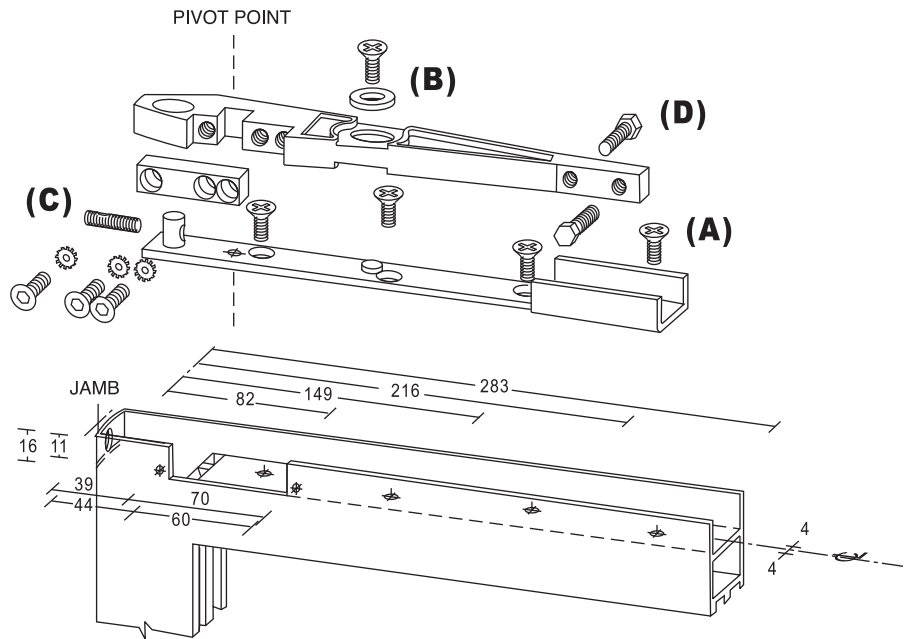
Prepare top rail of door as detailed, ensuring that internal door face is cut away to give access to spindle during door hanging and hole to be drilled in heel of door to give access to adjustment screw (C).

\*Fix arm channel to top rail with 4 No. M6 csk screws (A). Insert arm into channel and secure with M6 csk socket head screws (B).

Insert M6 socket head alignment bolt, washer and locknut (C) into arm through slot in end of channel.

Adjust alignment bolts (D) onto side of channel.

\***Note:** Datum hole indicating pivot point



## BOTTOM RAIL

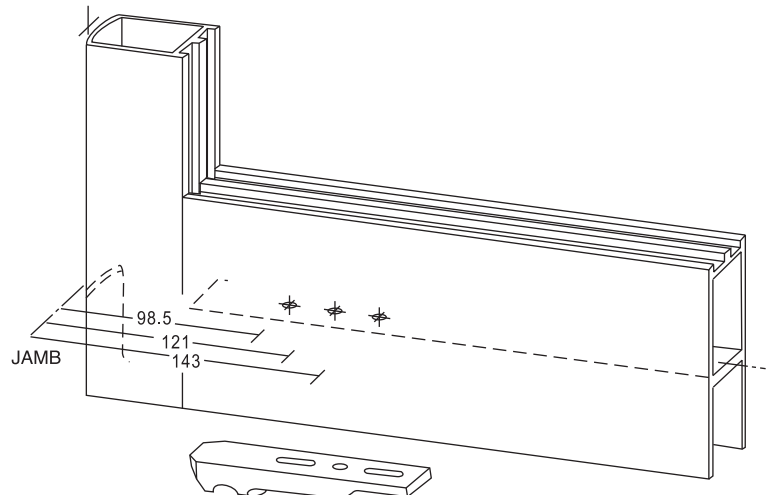
Prepare bottom rail of door as detailed.

Secure door plate of bottom pivot assembly to bottom rail of door with 2 No. M6 X 16mm long set screws and shakeproof washers (E) using only the slotted holes.

Check that projection of the bearing plate beyond the heel of the door gives the working clearance required.

Slacken the 2 fixed set screws and adjust if necessary.

Finally drill and tap bottom rail for 3rd M6 X 16mm long set screw and fix screw to maintain this position. Tighten all screws.

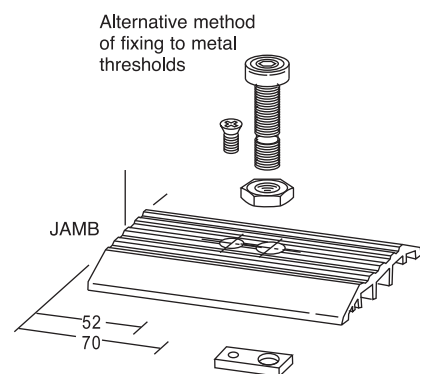
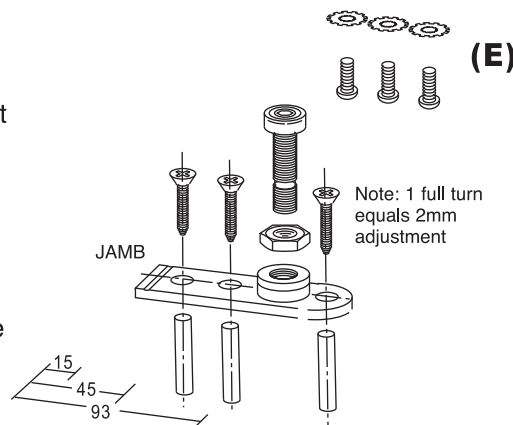


## FLOOR PIVOT

Determine overall height of bottom pivot assembly, allowing desired clearance, and secure with locknut.

Cut off excess thread flush with underside of plate or recess flooring to accommodate.

Fix bearing plate on to the floor with the extended end against the face of the jamb.



## TO ERECT THE DOOR

Holding door at an angle of approx. 15°, lower on to bearing plate pivot and gradually swing door vertical until arm recess in top of door locates against closer spindle.

**Note:** To ease the hanging of single action doors, temporarily remove head stop if possible.

Wedge door in the vertical position whilst spindle clamping block is located against spindle and securely tighten clamping screws using wrench key provided.

(Max. tightness can be obtained by using the palm of the hand against the wrench key).

Fit (cut out) cover plate.

Check that door closes to a position that aligns with door frame or adjacent door leaf. Any correction is obtained by adjusting alignment bolts (D) and alignment screw (C).



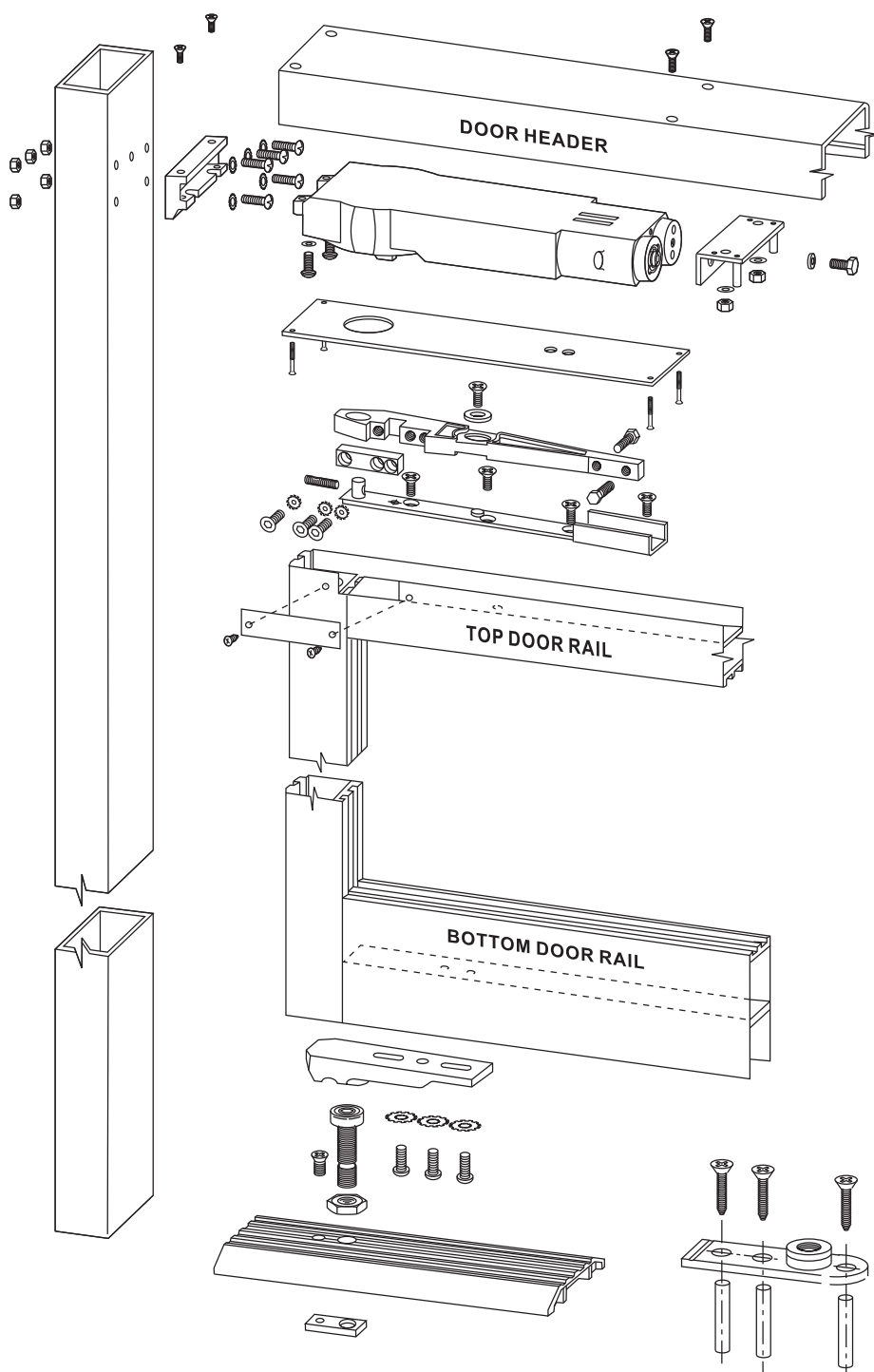
ALLEGION™

# SIZE 2-4 ADJUSTABLE OVERHEAD CONCEALED DOOR CLOSER FOR METAL APPLICATIONS

DOUBLE OR SINGLE ACTING, CENTRE PIVOTED FOR SIDE LOAD AND END LOAD APPLICATIONS

MAXIMUM ANGLE OF OPENING 130° SUBJECT TO SURROUNDING STRUCTURE

**MAINTENANCE (Quarterly)** Check to ensure correct setting of closing and latching speeds and that alignment and fixing screws are tight.



## IMPORTANT

NO responsibility can be accepted by the manufacturers if these installation instructions are disregarded.

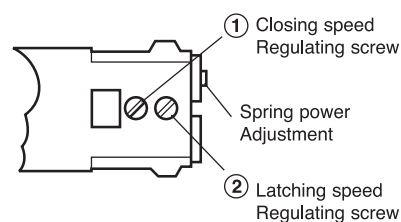
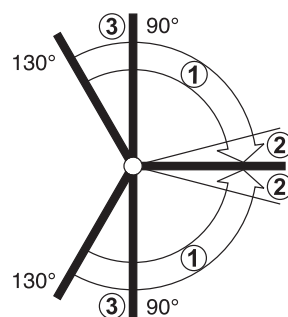
After closer is installed into the DOOR HEADER, do not drill in this area for it may damage closer.

## PROPOSAL for DOOR CLEARANCE

Both of door stile	3mm
Top door rail	3mm
Bottom door rail	4.8mm

## SPEED ADJUSTMENTS

- ① CLOSING RANGE
- ② LATCHING RANGE
- ③ HOLD OPEN ANGLE  
(Hold Open Units Only)



## Speed Adjustment



FASTER



SLOWER

Max. 2 turns in either direction