

SIZE 1-4 ADJUSTABLE BACKCHECK CLOSER
WITH HOLD OPEN ARM

PULL SIDE - REGULAR APPLICATION (FIG. 1)

ANGLE OF OPENING 180° SUBJECT TO HINGE & SURROUNDING STRUCTURE

R.H. DOOR

L.H. DOOR

PEEL TEMPLATES OFF BACKING PAPER
POSITION ON DOOR/FRAME
PILOT DRILL 7 HOLES

FIT BACKPLATE (3 SCREWS)
FIT BRACKET ASSEMBLY (2 SCREWS)
PEEL OFF TEMPLATES

FIT MAIN ARM ASSEMBLY TO MECHANISM (90°)
SECURELY TIGHTEN FIXING SCREW

LOCATE MECHANISM ASSEMBLY ON
BACKPLATE AND SECURE (2 SCREWS)

OPEN DOOR TO ENGAGE SECONDARY ARM STRIP AND TUBE
CLOSE DOOR AND SET SECONDARY ARM AT 90° TO DOOR FACE
SECURELY TIGHTEN CLAMP BOLT WITH SPANNER

SET HOLD OPEN ARM AS SHOWN ABOVE
IF NECESSARY ADJUST POWER AND DOOR SPEEDS

FIT COVER TO CLOSER
FOLLOWING STEPS SHOWN
(2 SCREWS)

POWER (FIG.1)	
FACTORY SET TO SIZE 3	
CLOSER POWER SIZE	NUMBER OF TURNS (APPROX)
1	-6
2	-3
3	0
4	+5



WARNING
DOOR CLOSER POWER #1 & 2 AND THOSE SUPPLIED
WITH MECHANICAL HOLD OPEN DEVICES MUST NOT BE
INSTALLED ON FIRE / SMOKE DOORS.

2110/104/00
ISSUE A

CLOSER
POWER
DOOR
SIZE

#1
20kg
750 MAX

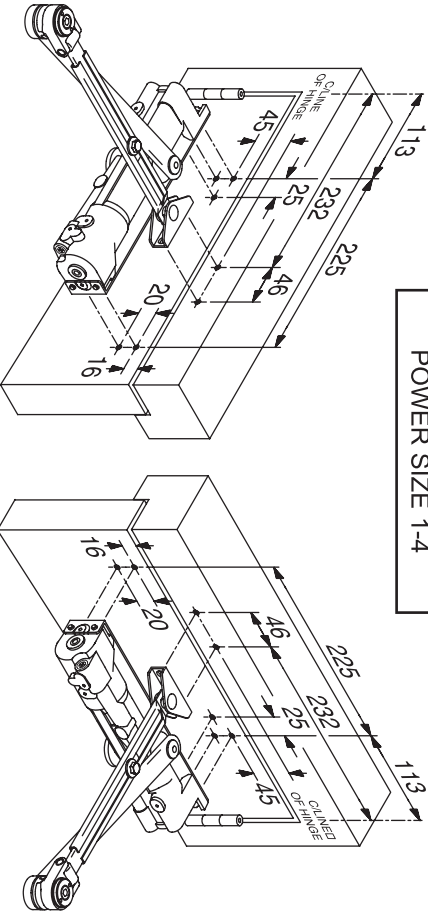
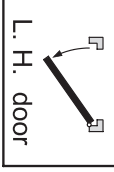
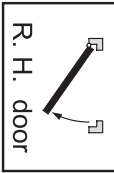
#2
40kg
850 MAX

#3
60kg
950 MAX

#4
80kg
1100 MAX

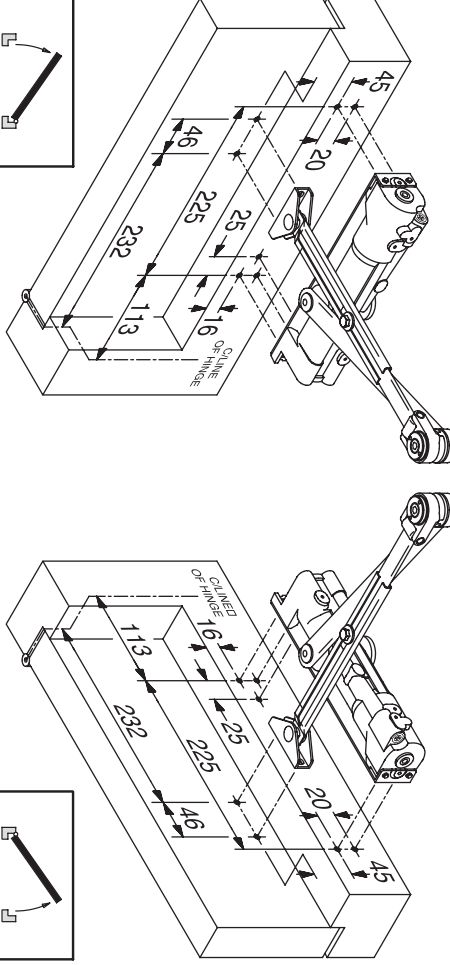
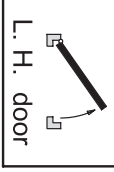
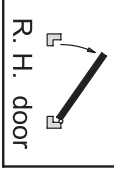
REGULAR FIXING (FIG.1)

POWER SIZE 1-4



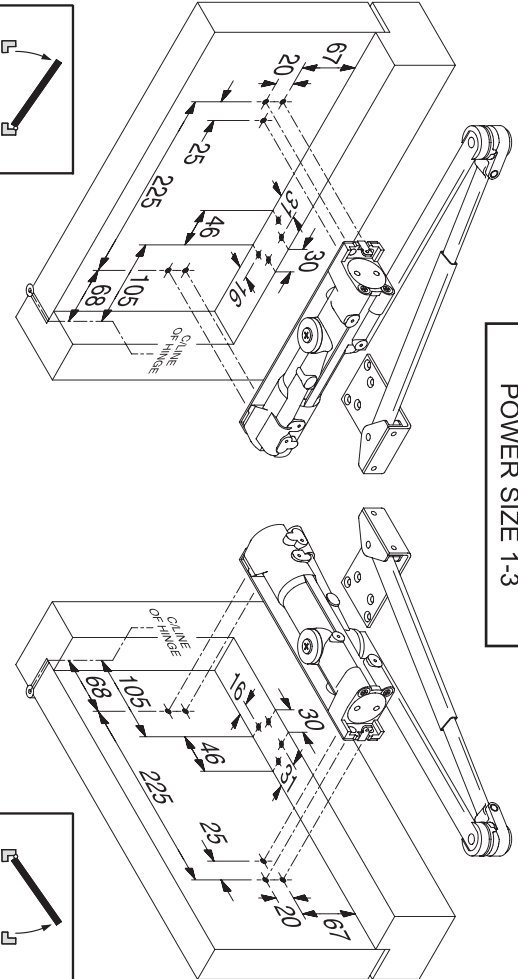
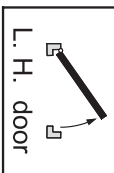
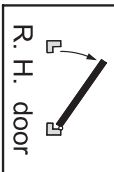
TRANSOM FIXING (FIG.61)

POWER SIZE 1-4



PARALLEL ARM FIXING (FIG.66)

POWER SIZE 1-3



FOR TRANSOM AND PARALLEL ARM INSTALLATION PROCEDURE SEE OVERLEAF

MAINTENANCE (Quarterly)
Check that the door closer closes the door correctly and fixing screws are tight.
Periodically apply light oil to arm knuckle joints and door hinges.

NOTE - all dimensions
are in millimetres

PUSH SIDE - PARALLEL ARM APPLICATION (FIG.66)

ANGLE OF OPENING 180° SUBJECT TO HINGE & SURROUNDING STRUCTURE

L.H. DOOR

R.H. DOOR

1 MARK OUT DOOR/FRAME AS DETAILED OVERLEAF PILOT DRILL 9 HOLES

2 FIT BACKPLATE (3 SCREWS)
FIT ARM BRACKET ASSEMBLY TO FIG.66 BRACKET (2 SCREWS)
FIT BRACKET ASSEMBLY TO FRAME (4 SCREWS)

3 FIT MAIN ARM ASSEMBLY TO MECHANISM (30°)
SECURELY TIGHTEN FIXING SCREW

4 FULLY CLOSE DOOR SPEED AND LATCH REGULATORS
PULL MAIN ARM FORWARD, LOCATE MECHANISM ASSEMBLY ON BACKPLATE AND SECURE (2 SCREWS)

5 OPEN DOOR TO ENGAGE SECONDARY ARM STRIP AND TUBE
CLOSE DOOR AND SET ARMS AS SHOWN ABOVE
SECURELY TIGHTEN CLAMP BOLT WITH SPANNER

1 2 3

POWER (FIG.66)	
FACTORY SET TO SIZE 3	
CLOSER POWER SIZE	NUMBER OF TURNS (APPROX)
1	-6
2	-3
3	0
3+	+5

LATCH 2
DOOR SPEED 1
BACKCHECK 3
4mm
POWER

6 SET HOLD OPEN ARM AS ABOVE
IF NECESSARY ADJUST POWER AND DOOR SPEEDS

7 FIT COVER TO CLOSER FOLLOWING STEPS SHOWN (2 SCREWS)

STANDARD COVER

OPTIONAL COVERS

PUSH SIDE TRANSOM APPLICATION (FIG.61)

ANGLE OF OPENING 180° SUBJECT TO HINGE & SURROUNDING STRUCTURE

L.H. DOOR

R.H. DOOR

1 MARK OUT DOOR/FRAME AS DETAILED OVERLEAF PILOT DRILL 7 HOLES

2 FIT BACKPLATE (3 SCREWS)
FIT ARM BRACKET ASSEMBLY (2 SCREWS)

3 FIT MAIN ARM ASSEMBLY TO MECHANISM (90°)
SECURELY TIGHTEN FIXING SCREW

4 LOCATE MECHANISM ASSEMBLY ON BACKPLATE
AND SECURE (2 SCREWS)

5 OPEN DOOR TO ENGAGE SECONDARY ARM STRIP AND TUBE
CLOSE DOOR AND SET SECONDARY ARM AT 90° TO DOOR FACE
SECURELY TIGHTEN CLAMP BOLT WITH SPANNER

1 2 3

POWER (FIG.61)	
FACTORY SET TO SIZE 3	
CLOSER POWER SIZE	NUMBER OF TURNS (APPROX)
1	-5
2	-3
3	0
4	+5

1 2 3

7 FIT COVER TO CLOSER FOLLOWING STEPS SHOWN (2 SCREWS)

STANDARD COVER

OPTIONAL COVERS