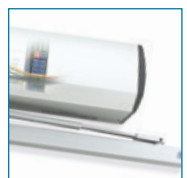
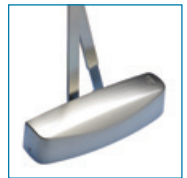
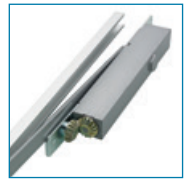


# ARCHITECTURAL HARDWARE

## Door controls

*Keeping people safe and secure  
where they live, work and visit.*



## Door control solutions from our most trusted global brands

Setting the industry standard for quality, durability and innovation, Allegion has a door control and closer for any application. From the simplicity of a mechanical non-fire door closer for basic functionality, to microprocessor low energy operators for special applications where doors are required to satisfy Part M of the Building Regulations.

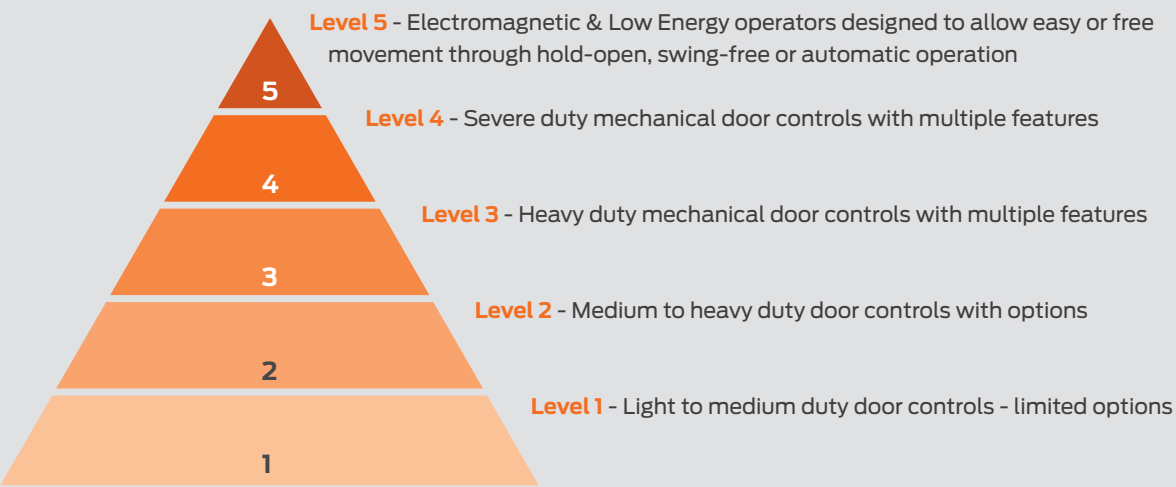
### Specifying Allegion door controls

When specifying an Allegion door closer you can be assured that an uncompromising attention to detail has been given to every stage of its design and manufacture. This ensures that its products and systems meet the highest possible quality and conformity certifications and exceed the requirements of all applicable European Standards.

A global leader in every sense of the word, Allegion has an unrivalled track record in satisfying the demands of architects, designers, specifiers and building contractors throughout the world.

### Performance levels

Our multi-level approach to door controls ensures there is a solution for all projects, door applications and budgets.





**CE Mark explained**

Door closers are an important link in the control of fire and smoke and their usage can help save lives.

From July 2013 it became a legal requirement for all products which are covered by a harmonised EN standard to be CE marked before they can be placed on the market.

For door closing devices, EN 1154 and EN 1155 became harmonised standards across Europe and are now the standards required in order to attain CE marking. Validation of the CE mark requires the production of a Declaration of Performance (DoP) by the manufacturer.

DoPs for all Briton door controls are available on our website at:

[www.britondops.co.uk](http://www.britondops.co.uk)



Performance across the range

Compliance to EN 1154/EN 1155 and CE marking covers the majority of Briton door controls, from our budget range of fixed power closers through to our high efficiency cam action slide arm closers and heavy duty floor springs.

Door size chart - EN 1154

EN Closer Size	Recommended Door Sizes	
	Maximum Door Width	Maximum Door Weight
1	750mm	20kg
2	850mm	40kg
3	950mm	60kg
4	1100mm	80kg
5	1250mm	100kg
6	1400mm	120kg
7	1600mm	160kg

**Note:**

For fire door applications, power size 3 is a minimum requirement.



EN 1154 & EN 1155

All forms of “Controlled Door Closing Devices” are covered by a harmonised European Standard, **EN 1154**. It provides details on product types by use, test cycles, door mass, corrosion resistance and product performance requirements using a 6 digit classification code.

**EN 1155** specifies the requirements for devices which provide an electrically controlled hold-open or swing-free function on doors used for fire/smoke compartmentation. This includes separate electrically controlled hold-open devices which may be used in conjunction with a standard mechanical door closer.

Each standard prescribes the test methodology for randomly selected production line products. Compliance with the standards, supported by suitable evidence of audit testing of the certified product, and regular factory process control inspections, allows the application of the CE mark.

EN 1154	EN 1155		EN 1154	EN 1155
4 3 / 4	3 3	Category of use	Defines the angle from which the device will close the door in a controlled manner. Grade 3 - 105° Grade 4 - 180°	Only Grade 3 category of use is identified for electrically powered hold-open devices for use by the public and others with little incentive to take care - where there is some chance of misuse of the door
8 8	8 5 / 8	Test cycles	Prescribes a series of test cycles. Only one grade is identified. Grade 8 - 500,000 cycles	Prescribes a series of test cycles. Grade 5 - 50,000 cycles for all electrically powered hold-open devices Grade 8 - 500,000 cycles for electrically controlled hold-open or swing-free closers that contain operating arms
3 1 - 7	3 3 - 7	Door mass/size	Identifies the closer power size as defined by the door width and mass. Adjustable power closers are defined by their upper and lower power sizes. See table on page 13	Hold open power size is suitable for a range of power sizes. Both the max. and min. power sizes are defined. See table on page 13
1 0 / 1	1 1	Suitability for fire/smoke doors	Having successfully completed a fire test to EN 1634. Grade 1 - suitable for use on fire/smoke door assemblies Grade 0 - not suitable for use on fire/smoke door assemblies	Having successfully completed a fire test to EN 1634. Only Grade 1 is identified Grade 1 - suitable for use on fire/smoke door assemblies
1 1	1 1	Safety	Ensures the operation and suitability of the closer is hazard free - operates without risk to the user. Only Grade 1 is identified	All electrically powered devices are required to satisfy the requirement of safety in use. Only Grade 1 is identified
3 0 - 4	3 0 - 4	Corrosion resistance	Level of corrosion resistance to EN 1670 Neutral Salt Spray test and operation of the product at extreme temperatures. Five grades are identified. Grade 0 - no identified resistance Grade 1 - mild resistance Grade 2 - moderate resistance Grade 3 - high resistance Grade 4 - very high resistance (240 hrs)	

**The Equalities Act - disability legislation**

For some building users a self-closing fire door can become a barrier – or at least an obstacle which hampers their movement into and within the building.

Legislation aimed at providing universal accessibility of buildings requires service providers to make *"reasonable adjustments to the physical features of their premises to overcome barriers to access"*.

To meet obligations under the Equalities Act, Approved Document M (ADM) of The Building Regulations and BS 8300 continue to be the yardsticks by which conformity is measured.

ADM and BS 8300 provide guidance in establishing recommended maximum opening forces for door controls to assist less able users.

**Opening v Closing Forces**

For accessibility, Approved Document M and BS8300 are concerned with overcoming the resistance to opening which a door closer imparts. Both documents stipulate maximum “opening force” whereas for fire safety, EN 1154 is concerned with ensuring the door closes fully in order to maintain the door’s fire integrity and is measured as “closing moment” (a combination of the door’s mass and width). The two forces are not directly comparable.

Doors which need to be fire resisting and accessible must satisfy both the requirements of the maximum opening force for accessibility and minimum closing moment for fire safety. Non fire resisting doors only need to satisfy the maximum opening force requirements of BS8300.

**BS8300 Incorporating Amendment No.1 – 7.3.1 states:**

"For disabled people to have independent access through single or double swing doors, the opening force, when measured at the leading edge of the door, should not be more than 30N from 0° (door in the closed position) to 30° open, and not more than 22.5N from 30° to 60° of the opening cycle."

"The ability of a controlled door closing device to close effectively while keeping within the opening force limits depends on its efficiency and the resistances from edge seals, hinge friction, latch resistance and differential air pressure. The opening force should be checked using a plunger type force measuring instrument."

## Fire Safety & Approved Document B

**Fire Safety Order**

The Regulatory Reform (Fire Safety) Order covers general fire safety in England and Wales.

Proof of compliance rests with the building owner or other reasonable person and policing of this is done through spot checks by the Fire Service. Failure to comply can result in a fine or prison sentence and would invalidate any insurance cover.

**Approved Document B**

In England and Wales, Approved Document B of Building Regulations requires third party fire testing to ensure that door controls and other life safety products are fit for purpose.

All Briton door controls which are used for fire and smoke door assemblies are third party fire tested and approved by Certifire.

Certifire approval is a means of providing reassurance to specifiers and authorities that all aspects of the product’s testing, assessment and manufacturing have been checked and verified to ensure:

- They have been included in successful fire door tests
- They have been tested and comply with the relevant EN or BS standards
- They are manufactured in quality assured facilities under ISO 9000 certification

Certification documentation for all Briton door controls is readily available on request.



**Accessibility guidance**

Allegion is able to offer guidance and product solutions to cover the following areas:

- Low energy door controls
- Electromagnetic door controls
- High efficiency mechanical door controls to meet the conflicting requirements of BS 8300 and fire safety requirements of EN 1154
- Door closers which are capable of meeting these demands and disability legislation are identified by this symbol.

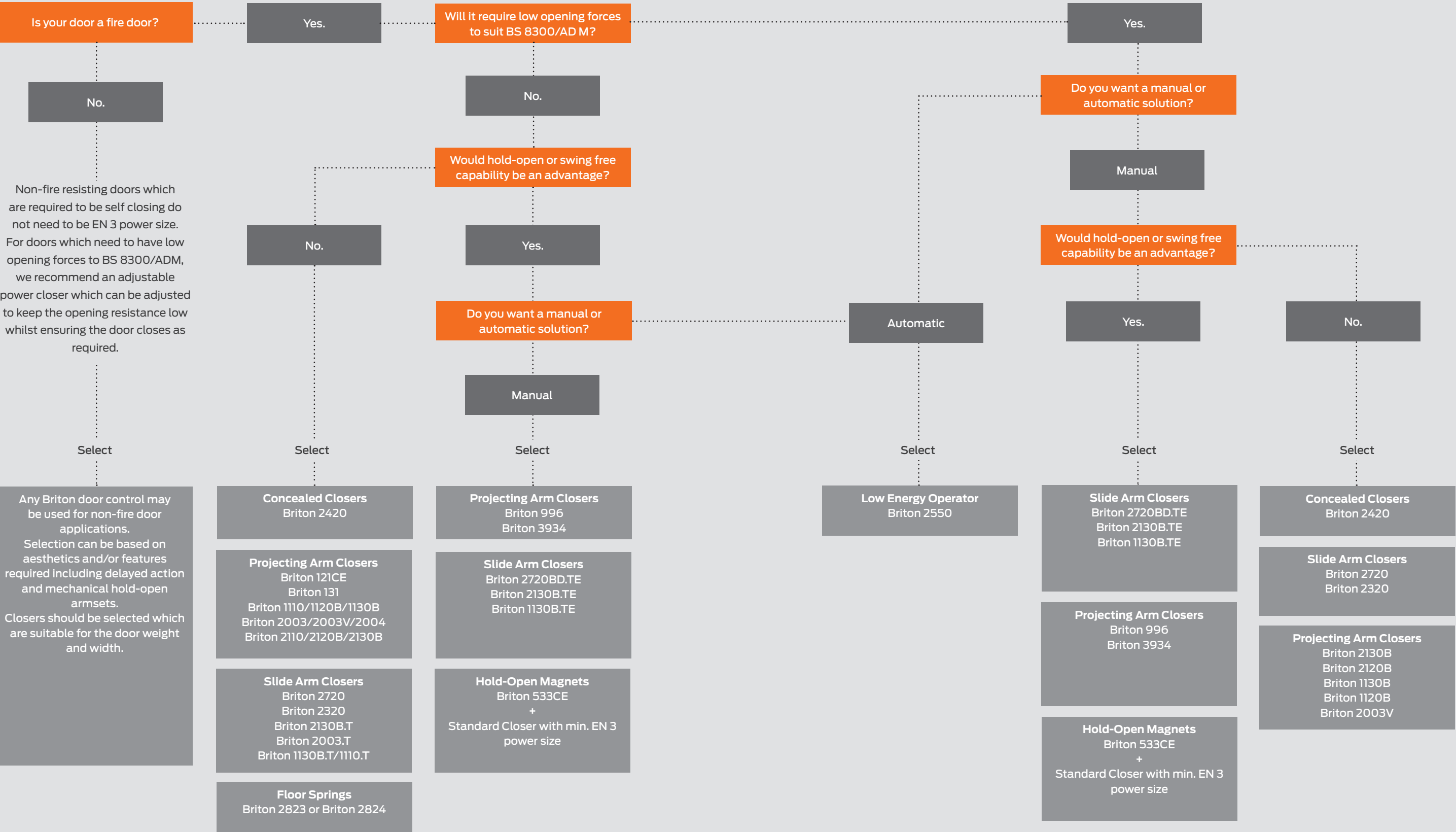


**Recommendation**

High efficiency Briton closers which are capable of meeting the required levels of opening and closing forces are marked with the “Wheelchair Symbol” but accurate installation, hinge friction, door seals and variable air pressure can all have a bearing on the opening resistance of the doorset.

For doors which must also meet the stringent closing force requirements for fire door applications, it may be more appropriate to use an electromagnetic hold-open or swing-free closer or a powered opening solution.







Fixing Applications Guide

Door control options

There are fundamentally 2 types of door control, door closers which are mounted on the door or frame and floor springs which are concealed within the floor.



Regular fixing \*

Closers are door mounted on the pull or opening face of the door.

Transom fixing \*

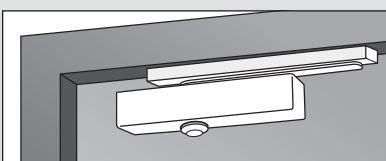
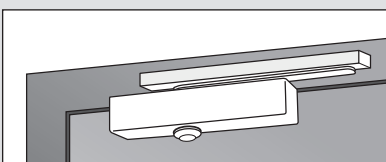
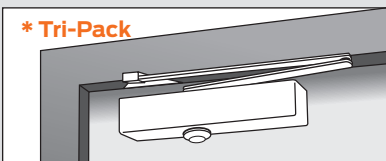
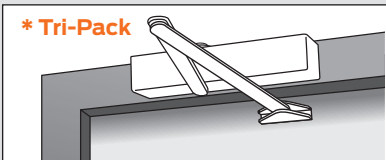
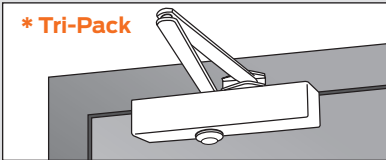
Closers are transom mounted on the push or closing face of the door.

Parallel fixing \*

Closers are door mounted on the push or closing face of the door.

Slide track fixing

Closers with slide arm and track can also be door or transom mounted on the pull or push side of the door. Tracks can be mounted on the face or underside of the transom when mounted on the push side of the door.



Concealed closer mounting

Closers for concealed mounting offer the ultimate aesthetic option. The closer is discreetly concealed within the door leaf (or the head frame) and a single arm operates within a slide track mounted in the underside of the head frame (or top of the door leaf).

Unlike surface mounted closers, the concealed option usually has limitations on its fire performance and requires a certain minimum door thickness.

\* Tri-Pack

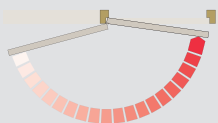
Most Allegion door closers are “Tri-packed” meaning that they contain the necessary arm, bracket and fixings to enable them to be fitted in any of these applications.

Refer to certification or DOP to ensure the application is approved for fire doors.

Closer Adjustments

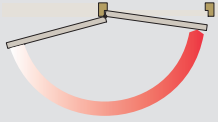
Adjustable closing power

PowerAdjust mechanism provides a visual guide on the EN power level at which the closer has been adjusted.



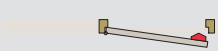
Adjustable closing speed

Adjustable from 180° opening through to the final 15°.



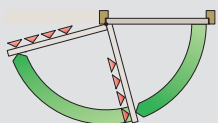
Adjustable latch action

The speed of closing in the last 15° can be adjusted to overcome seals and latches.



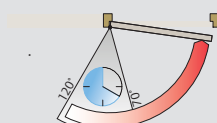
Adjustable backcheck

To prevent damage to the door, hardware and adjacent walls caused by the door being flung open or caught by a gust of wind. Angle at which the backcheck is activated is usually adjustable.



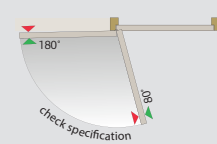
Adjustable delayed action

The closer can be set to close more slowly to give people extra time to pass through the doorway. Adjustable timing between 70° and 120°.

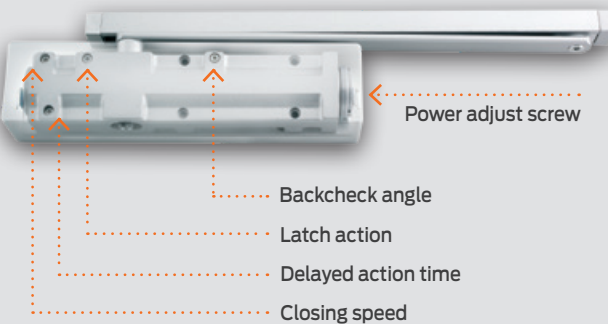


Adjustable hold-open

Mechanical and electro-magnetic hold-open variants are available to hold the door in the open position.



Adjustment screws will vary from model to model (2700 shown)



Mechanical hold-open unit

Mechanical hold-open is achieved by substituting the standard armset with a hold-open armset (or a component concealed within the slide track). It enables doors to be securely held in the open position at a pre-set angle (adjustable on installation depending on model and the mounting application).

The hold-open facility can be easily overridden and the force required to release the hold-open action can be adjusted to suit the weight of door.

Please note, mechanical hold-open is not permitted on fire door applications.



Electromagnetic hold-open or swing-free

Electromagnetic hold-open or swing-free closers allow a door to be held open (or free to swing) in normal use but close under spring power in the event of a fire or power failure. This can be achieved using a closer which has an electromagnetic function integrated into the closer mechanism, or by using a separate electromagnetic holder in conjunction with a standard door closer. The electromagnet temporarily disables the spring mechanism which is automatically re-connected in the event of an alarm or power failure.

Please note, electromagnetic hold-open or swing-free is permitted on fire door applications when connected into the building fire alarm or smoke detection system.

Door Controls – Overview & Selector



		LEVEL 5 Electromagnetic & Low Energy												LEVEL 4 Floor Springs				LEVEL 4 Overhead Closers					LEVEL 3 - 2 Overhead Closers														LEVEL 1 Closers	
		Briton 2720BD.TE	Briton 2721BD.TE	Briton 2130B.TE	Briton 1130B.TE	Briton 9963/01	Briton 9963/66	Briton 9964/01	Briton 9964/66	Briton 9965/01	Briton 9965/66	Briton 3934	Briton 2550	Briton 2822	Briton 2823	Briton 2824		Briton 2720BD.T	Briton 2721BD.T	Briton 2130B	Briton 2130BD <sup>3</sup>	Briton 2130B.T	Briton 2320.T <sup>4</sup>	Briton 2420B.T	Briton 2120B	Briton 2110	Briton 2003V	Briton 2004	Briton 2003.T	Briton 2003	Briton 1130B.T	Briton 1130B	Briton 1120B	Briton 1110.T	Briton 1110	Briton 131	Briton 121CE	
EN 1154 Categories	Performance & Features																																					
	Category of Use	3	3	3	3	3	3	3	3	3	3	3	-	3	3		4	4	4	4	4	4	4	3	4	4	4	4	4	4	4	4	4	4	3	3	4	
	No. of Test Cycles	8	8	8	8	8	8	8	8	8	8	8	-	8	8		8	8	8	8	8	8	8	8	8	8	8	8	8	8	8	8	8	8	8	8	8	
	Door Mass/Size	3-5	3-5	3-4	3-4	3	3	4	4	5	5	3-4	-	3	4		2-5	2-5	2-6	2-6	2-4	2-4	2-4	1-4	2-4	1-4	4	3	3	2-4	2-6	2-4	3	2-4	2-4	3		
	Fire Behaviour	1	1	1	1	1	1	1	1	1	1	1	-	1	1		1	1	1	1	1	1	1	1	1	1	1	1	1	1	1	1	1	1	1	1	1	
	Safety	1	1	1	1	1	1	1	1	1	1	1	-	1	1		1	1	1	1	1	1	1	1	1	1	1	1	1	1	1	1	1	1	1	1	1	
	Corrosion Resistance	3	3	3	3	3	3	3	3	3	3	3	-	3	3		3	3	3	3	3	3	3	3	3	3	3	3	3	3	3	3	3	3	3	3	3	
Regular Fixing (Power size) <sup>1</sup>		#3-5	#3-5	#3-4	#3-4	#3		#4		#5		#3-4	#2-5	#2	#3	#4		#2-5	#2-5	#2-6	#2-6	#2-4	#2-4	#2-4	#1-4	#2-4	#1-4	#4	#3	#3	#2-4	#2-6	#2-4	#3	#2-4	#2-4	#3	
Transom Fixing (Power size) <sup>1</sup>						#3		#4		#5		#3-4					#2-4	#2-5	#2-6	#2-6		#2-4	#2-4	#1-4	#2-4	#1-4	#4	#3	#3	#2-4		#2-4	#3	#2-4	#2-4	#3		
Parallel Fixing (Power size) <sup>1</sup>							#3		#4		#5	#3						#2-5	#1-5				#1-4	#2-4	#1-4				#2-4	#2-5	#3-4	#3	#3	#3	#3	#3		
Slide Track Mounted (Pull side)		■	■	■	■								■				■	■					■					■							■			
Slide Track Mounted (Push side)		■	■	■	■								■				■	■					■												■			
Concealed Door/Transom Mount																								■														
High efficiency Cam Action technology		■	■														■	■					■	■														
Timber fire doors up to		2 hr	2 hr	2 hr	2 hr	2 hr	2 hr	2 hr	2 hr	2 hr	2 hr		1 hr	1 hr			2 hr	2 hr	2 hr		2 hr	2 hr	1 hr	2 hr	2 hr	2 hr	2 hr	2 hr	2 hr	2 hr	2 hr	2 hr	2 hr	2 hr	2 hr	2 hr	2 hr	
Steel fire doors up to		1 hr	1 hr	4hr <sup>2</sup>													1 hr	1 hr	4 hr	4 hr				4 hr	4 hr	4 hr	4 hr	4 hr	4 hr	4 hr	4 hr	4 hr	4 hr	4 hr	4 hr	4 hr	4 hr	
Certifire Approval (Cert. No.)		738	738	111	388	109	109	109	109	109	109	5598					738	738	111		111	5291	5292	111	111	111	111	111	111	111	388	388	388	388	388	5512	390	
Adjustable Power		■	■	■	■								■	■			■	■	■	■	■		■	■	■	■	■				■	■	■		■	■		
Adjustable Closing Speed		■	■	■	■	■	■	■	■	■	■	■	■	■	■		■	■	■	■	■		■	■	■	■	■	■	■	■	■	■	■	■	■	■	■	
Backcheck Facility		■	■	■	■												■	■	■	■	■		■	CS	■		■				■	■	■					
Delayed Action		■	■														■	■		■																		
Mechanical Hold-Open													□	□	□		□	□	□	□		□	□	□	□	□	□		□					□				
Electro-mechanical Hold-Open		■	■	■	■	■	■	■	■	■	■																											
Electro-mechanical Swing Free						■	■	■	■	■	■																											
Power assisted opening/spring closing												■																										

■ Feature as standard

□ Available as an option

CS - Cushion Stop facility

<sup>1</sup> figures represent the Certifire Approved applications and the power sizes this covers.

<sup>2</sup> 2130 with classic cover is certified only for 1 hr on steel doors

<sup>3</sup> 2130BD is NOT CE marked and therefore should not be used on fire doors

<sup>4</sup> applies to 2320.T and 2321.T

**IMPORTANT NOTE:** Mechanical hold-open armsets must not be used on fire doors.

Closer finishes explained

For overhead closers which comprise a body and armset, the finish of the complete closer is specified either with black armset (including regular or parallel fixing bracket) or with matching armset.

For example, a closer in a sprayed silver finish is specified as:

SE - with black armset

SES - with matching silver armset

NB: Black armsets only available on Briton 996 closers.

When ordering simply add the finish code to the end of the product code

e.g. 1120B.SES

**Please note:** a more detailed description of Briton finish options can be found on page 74 of this brochure.

## 2700 Series - Cam Action Door Closers (Level 5)

The Briton 2700 Series is a precision manufactured cam-action, slide channel door closer, in a compact, surface fixed unit. It provides exceptional ease of use by reducing the resistance encountered when opening the door. The Briton 2700 Series bridges the gap between the requirements for fire and smoke control and ease of operation required for accessibility.



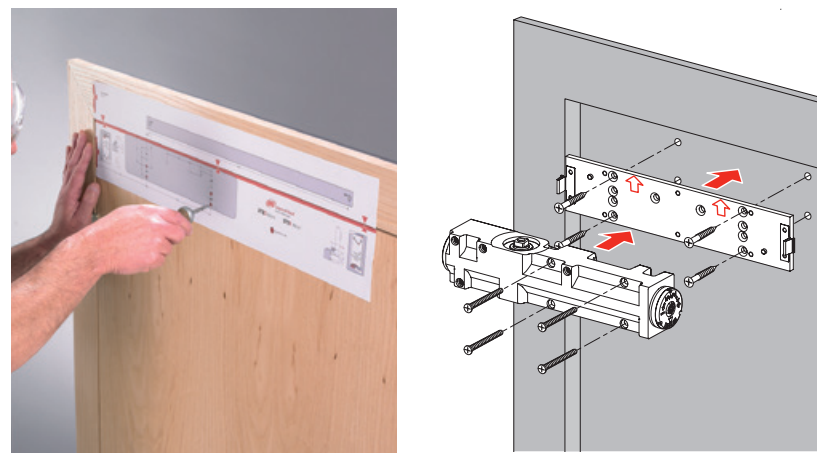
2720 with A line cover ..... and with softline cover



Adjustments: **1** - Closing power; **2** - Closing speed; **3** - Latch action; **4** - Backcheck; **5** - Delayed action (120° - 70°)

### Installation made quick and easy

The efficiency and durability of an overhead door control is greatly improved by accurate installation. The Briton 2700 Series has a number of features aimed at simplifying the installation process, including self adhesive Accufit template and mounting bracket. With the addition of the 'FAST' power adjustment dial and snap-on covers the process is quick and easy too.



## Easy opening, reliable closing

### Principal Features & Benefits

- A** Cast iron body with a naturally high graphite content is self lubricating, providing high levels of durability and long life performance.
- B** High performance cam action technology is extremely efficient, providing reliable closing but easy to open.
- C** Full complement bearings provide increased bearing load for efficient operation and improved reliability.
- D** **FAST** PowerAdjust dial feature indicates the current power setting.
- E** Silicon chrome alloy steel springs for superior strength and reliability.
- F** High quality hydraulic fluid with built-in temperature compensation ensures reliable performance without the need for seasonal adjustment.
- G** Unique self-adhesive 'Accufit' installation template and mounting plate with dowel fixings to position the closer body ensures a quick, simple and accurate installation.
- H** A line and Softline cover options have a 'push and click' fit for quick installation
- J** Co-ordinated track design with concealed fixings

Also available with electromagnetic hold-open in the slide track.

Briton 2700 Series door closers are packed complete, reducing the possibility of lost or missing parts.

### Testing & Certification

CE marked to EN1154 (AD0264)

CE marked to EN1155 for electromagnetic variants

Fire tested to EN1634 on timber doors to achieve a 2 hour fire rating, and 1 hour for metal doors.

Certifire Approved CF738

Full Declaration of Performance available from our website at:

[www.britondops.co.uk](http://www.britondops.co.uk)



### What's in the box?

- Closer Body
- Body Cover
- Armset and Track
- Fixing Pack
- Accufit template and backplate
- Installation Instructions



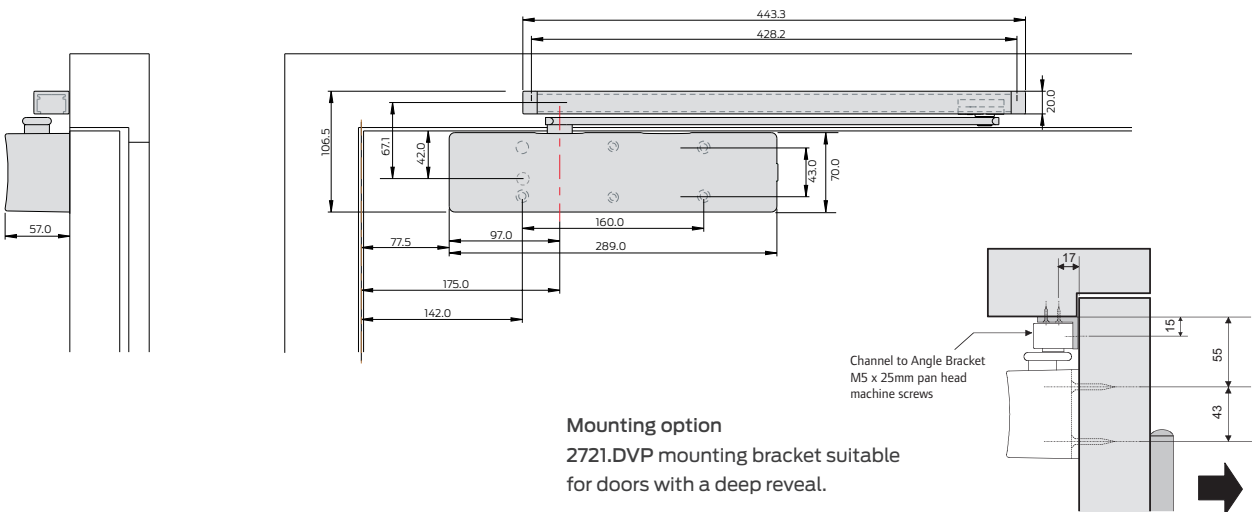
2700 Series – Quick Selector

Product features	Product references			
	2720BD.T	2721BD.T	2720BD.TE	2721BD.TE
Pull side door / Push side transom mounting	■	door mount only		
Push side door / Pull side transom mounting				door mount only
Variable closing power EN size	2 - 5*	2 - 5	3 - 5	3 - 5
FAST power adjust dial	■	■	■	■
Easy Fit template & mounting plate	■	■	■	■
Maximum angle of opening (pull side)	180°	180°	120°	120°
Separate closing speed & latch action adjustment	■	■	■	■
Adjustable backcheck	■	■	■	■
Adjustable delayed action (between 70° -120°)	■	■	■	■
In-built temperature compensation	■	■	■	■
Mechanical hold-open facility (80° -120°)	□	□		
Electromagnetic hold-open facility (80° -120°)			■	■
Matching slide channel, arm & cover finish	■	■	■	■
Cover options	Slimline/Softline	Slimline/Softline	Slimline/Softline	Slimline/Softline
Dimensions (Body L x D x H mm)	289 x 57 x 70mm	289 x 57 x 70mm	289 x 57 x 70mm	289 x 57 x 70mm
Channel/slide arm	443 x 20mm	443 x 20mm	575 x 26mm	575 x 26mm
Finishes available (see page 74)	SSS; PSS; PBS; SES (for both cover options and matching track)			
Warranty period	10yrs	10yrs	10yrs mechanical / 2yrs electrical	
CE Classification	4 8 2-5 1 1 3		3 8 3-5 1 1 3	

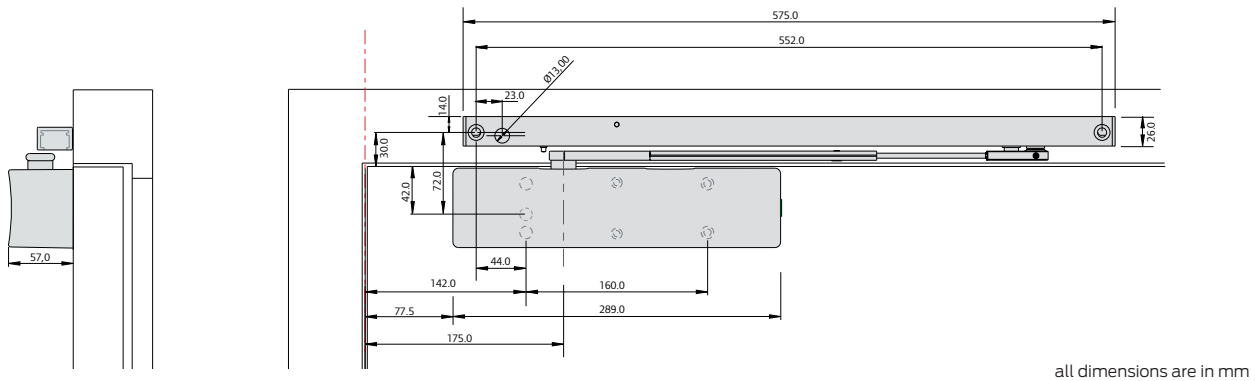
■ Feature as standard    □ Available as an option

\* Certifire Approval covers EN 2 - 5 for closers door mounted/pull side and EN 2- 4 for closers transom mounted/push side.

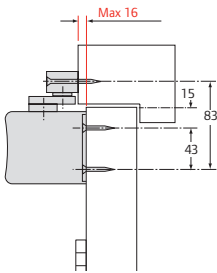
Standard closers with/without mechanical hold open (door mounted - pull side shown).



Closers with electromagnetic hold open track (door mounted - pull side shown).

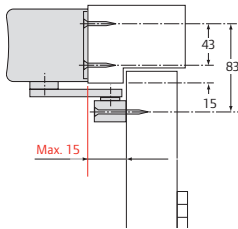


Briton 2720BD.T - door mounted pull side



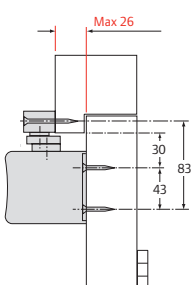
Max. opening angle - 180°

Briton 2720BD.T - transom mounted push side



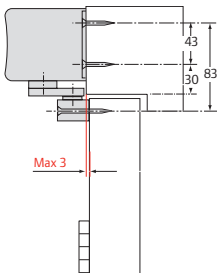
Max. opening angle - 120°

Briton 2721BD.T - door mounted push side



Max. opening angle - 120°

Briton 2721BD.T - transom mounted pull side

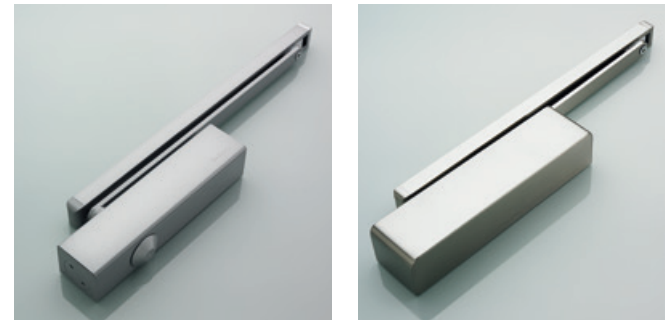


Max. opening angle - 180°

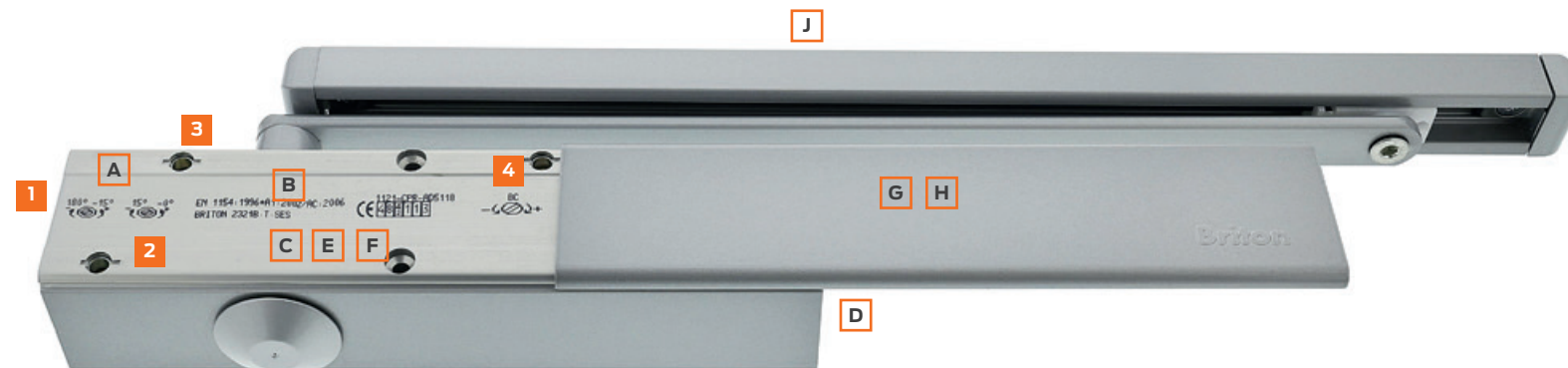
Product Ref:	Description	Mounting Position	Finishes
2720BD.T.A	Closer with Slimline cover - adjustable power EN size 2 - 5	Door mount pull side, transom mount push side	SES; SSS; PSS; PBS
2721BD.T.A	Closer with Slimline cover - adjustable power EN size 2 - 5	Door mount push side, transom mount pull side	SES; SSS
2720BD.T.S	Closer with Softline cover - adjustable power EN size 2 - 5	Door mount pull side, transom mount push side	SES; SSS
2721BD.T.S	Closer with Softline cover - adjustable power EN size 2 - 5	Door mount push side, transom mount pull side	SES; SSS
2720BD.TE.A	Closer with Slimline cover - adjustable power EN size 2 - 5 and Electromagnetic hold-open	Door mount pull side	SES; SSS; PSS; PBS
2721BD.TE.A	Closer with Slimline cover - adjustable power EN size 2 - 5 and Electromagnetic hold-open	Door mount push side	SES; SSS; PSS; PBS

## 2300 Series – Cam Action Door Closers (Level 5)

The Briton 2300 Series is offered as a simplified version of the Briton 2700 providing the same ease of use by reducing the resistance encountered when initialising the opening of the door. The 2300 Series is available with either a slide in trimplate or with a curved 'Softline' all-over cover.



2320 with slide in trimplate .... and with softline cover



Adjustments: **1** - Closing power; **2** - Closing speed; **3** - Latch action; **4** - Backcheck

### Installation made quick and easy

The efficiency and durability of an overhead door control is greatly improved by accurate installation. The Briton 2300 Series is supplied with the Accufit self adhesive template which not only speeds up the installation process but provides a means of accurately aligning the closer and track on the door and frame.



Briton 2320 with Softline cover in SSS finish, shown in "Push Side Transom Mount" option.

## Compact, modern slimline design

### Principal Features & Benefits

- A Briton 2300 Series has an extruded aluminium body.
- B High performance cam action technology is extremely efficient, providing reliable closing but easy to open
- C Full complement bearings provide increased bearing load for efficient operation and improved reliability.
- D Power adjustment allows installers to adjust the spring power to suit the size and location of the door.
- E Silicon chrome alloy steel springs for superior strength and reliability.
- F High quality hydraulic fluid with built-in temperature compensation ensures reliable performance without the need for seasonal adjustment.
- G A radiused slide in trimplate and spindle cap is available to conceal the main door closer fixings and adjustment screws.
- H An alternative 'all-over' cover is also available, secured by simple unobtrusive spring clips and providing a smooth, contemporary look.
- J Co-ordinated track design with concealed fixings
- K Unique self-adhesive 'Accufit' template, together with easy-to-read instructions assist quick and easy installation.

Briton 2300 Series door closers are packed complete, reducing the possibility of lost or missing parts.

### Testing & Certification

CE marked to EN1154 (AD5118)

Fire tested to EN1634 on timber doors to achieve a 2 hour fire rating.

Certifire Approved CF5291

Full Declaration of Performance available from our website at:

[www.britondops.co.uk](http://www.britondops.co.uk)



### What's in the box?

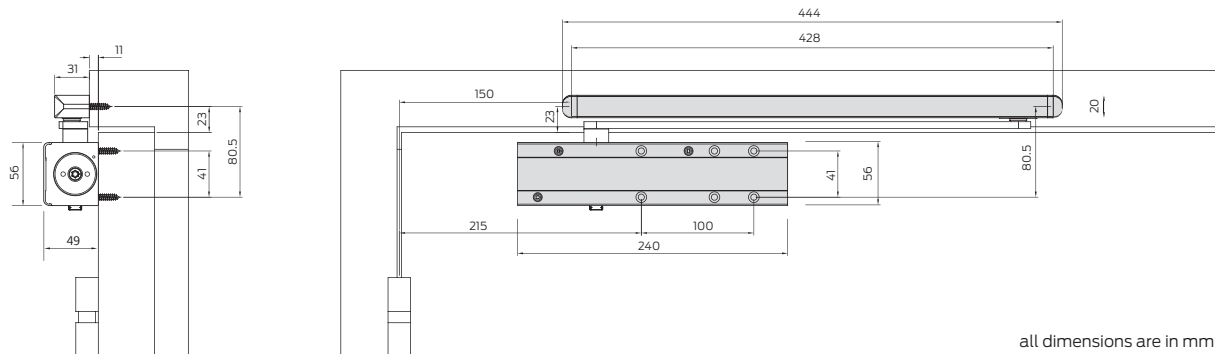
- Closer Body
- Body Cover
- Armset and Track
- Fixing Pack
- Accufit template and backplate
- Installation Instructions

2300 Series – Quick Selector

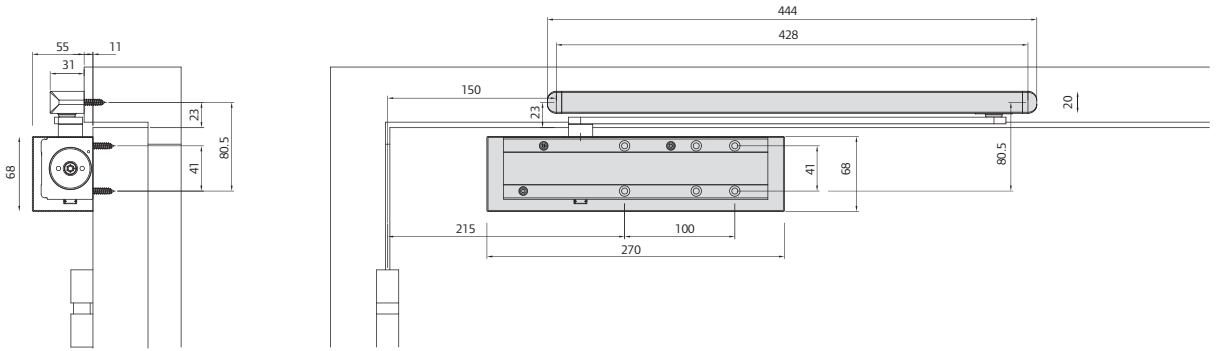
Product features		Product references	
EN Closer size	max. door size [width - weight]	2320B.T	2321B.T
1	750mm - 20kg		
2	850mm - 40kg	■	■
3	950mm - 60kg	■	■
4	1100mm - 80kg	■	■
5	1250mm - 100kg		
6	1400mm - 120kg		
Pull side door / Push side transom mounting		■	
Push side door / Pull side transom mounting			■
Variable closing power EN size		2 - 4	2 - 4
Accufit template and Accufit mounting plate		■	■
Maximum angle of opening*		180°	180°
Separate closing speed & latch action adjustment		■	■
Adjustable backcheck		■	■
In-built temperature compensation		■	■
Mechanical hold-open		□	□
Matching slide channel, arm & cover finish		■	■
All over metal cover		□	□
Dimensions (with trimplate L x D x H mm)		240 x 56 x 49	240 x 56 x 49
Dimensions (with cover L x D x H mm)		270 x 68 x 63	270 x 68 x 63
Finishes available		SSS; PSS; PBS; SES	
Warranty period		10yrs	10yrs
CE Classification		4 8 2-4 1 1 3	

- Standard
- Optional
- \* When door mounted.  
Transom mounted closers are restricted to 120° opening.

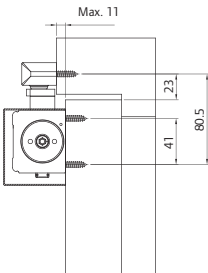
Closers with slide in trimplate



Closers with all over cover

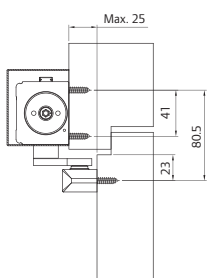


Briton 2320B.T - door mounted pull side



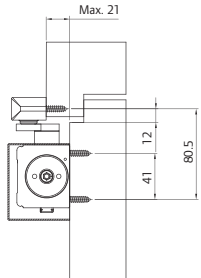
Max. opening angle - 180°

Briton 2320B.T - transom mounted push side



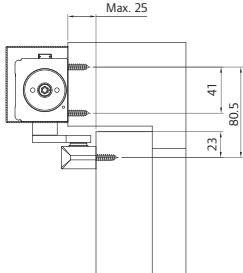
Max. opening angle - 120°

Briton 2321B.T - door mounted push side



Max. opening angle - 120°

Briton 2321B.T - transom mounted pull side



Max. opening angle - 180°

Product Ref:	Description	Mounting Position	Finishes
2320B.T	Closer with trimplate - adjustable power EN size 2 - 4	Door mount pull side, transom mount push side	SES
2321B.T	Closer with trimplate - adjustable power EN size 2 - 4	Door mount push side, transom mount pull side	
2320B.T.S	Closer with Softline cover - adjustable power EN size 2 - 4	Door mount pull side, transom mount push side	SES; SSS; PSS
2321B.T.S	Closer with Softline cover - adjustable power EN size 2 - 4	Door mount push side, transom mount pull side	



## 2300 & 2700 Series - Accessories

### Double door co-ordinator

Mounted in conjunction with cam action door closers, 2320 or 2720. The door co-ordinator controls the closing sequence of rebated double doors.

The unit is suitable for double doors with a combined leaf width of 1350mm to 2500mm (hinge centre to hinge centre).

### Features & Functions

- For use on door mounted pull side applications only
- Suitable for left and right hand doors
- Suitable for closers with EN power sizes 3 - 5
- Allows full 180° opening angle
- Site adjustable
- Cover caps conceal joints of the co-ordinator track
- Available in SE and SS finishes
- Supplied complete with carry bar

Briton 6100999  
Surface mounted double door co-ordinator  
available in SE or SS finish



**NOTE:** Carry bar must be fitted to ensure the correct closing sequence and to maintain certification

### Additional features

#### Cushion stop

Optional cushion stop (ref: 2327.CS) helps prevent doors from coming into contact with adjacent walls. It is installed within the slide track (note: this is not a backcheck function).



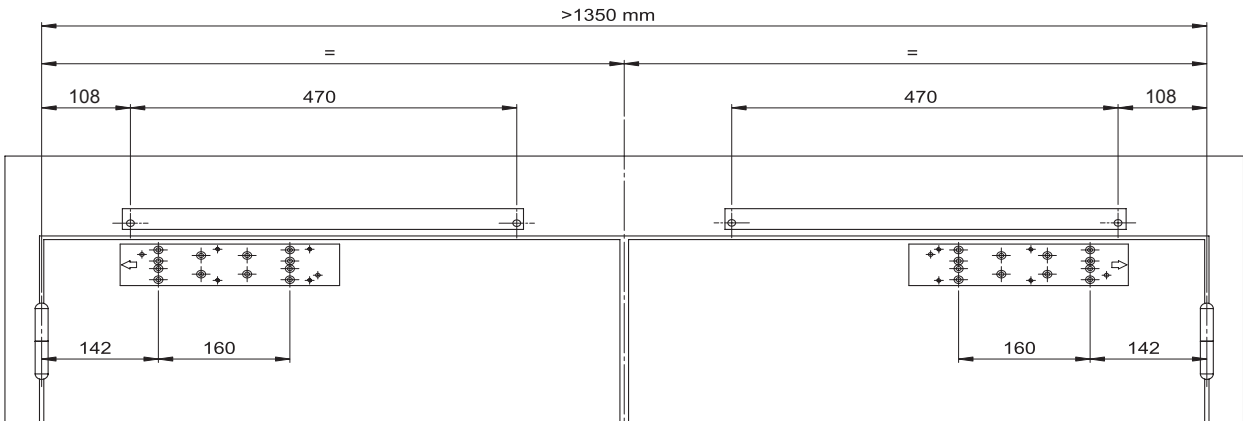
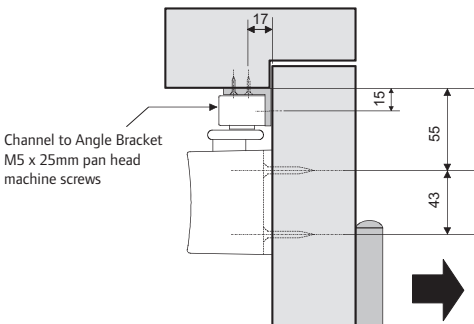
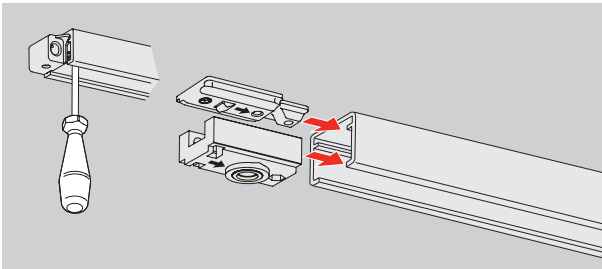
#### Mechanical hold-open

Optional mechanical hold-open unit can be retrofitted into the slide track in place of the standard pivot block. Hold-open angle can be adjusted from 80° to 120° and allows the door to be manually released from the hold-open position. The force required to release the hold-open action can be adjusted to suit the door weight.

**Mechanical hold-open must not be used on fire and smoke doors.**

#### Angle bracket

An optional mounting bracket 2721.DVP can be used to attach the slide track to the underside of the transom on doors with deep reveals.



### Certification

CE marked to EN 1158 (AF5003)

Fire tested to EN 1634 for use on timber fire doors up to 2 hour rating

Full Declaration of Performance available from our website at:

[www.britondops.co.uk](http://www.britondops.co.uk)



### Accessories and parts for 2700 Series

Product Ref:	Accessories & Parts
2720.BD.T.M	Door closer mechanism for Briton 2720
2720.CPA	A line Cover pack
2720.ECP	Track end caps & bracket pack
2720.FP	Fixing pack
2720.HP	Hold-open conversion pack
2720.NS	Nylon track slider
2720.T.AP	Track arm pack
2721.DVP	Track mounting bracket for frames with deep reveals
6100999	Double door co-ordinator 1350-2500 x 32.5 x 32mm
2327.CS	Cushion stop mounted in track

### Accessories and parts for 2300 Series

Product Ref:	Accessories & Parts
2300.AP	Arm pack (available in SE; SS; PS finishes)
2300.CPS	Softline cover pack (available in SE; SS; PS finishes)
2300.F.PLT	Fixing plate (available in black, white or SE finishes)
2300.FPCT	Fixing pack - Closer and track arm
2300.FPT	Fixing pack - Track arm only
2320.HP	Hold-open conversion pack
2320.NS	Nylon track slider
2320.RI	Rubber inserts
1502097.SE	6mm mounting fixing plate for extra body projection
6100999	Double door co-ordinator 1350-2500 x 32.5 x 32mm
2327.CS	Cushion stop mounted in track

## 2400 Series - Cam Action Door Closers (Level 5)

The Briton 2400 Series is a precision manufactured cam-action, slide channel door closer, in a compact concealed unit. With the closer body mounted within the top of the door and the slide track within the head frame, the Briton 2400 Series offers high resistance to abuse and offers a highly aesthetic solution being fully concealed when the door is closed. Suitable for doors 44mm thick and above.

Providing exceptional ease of use by reducing the resistance encountered when opening the door, the Briton 2400 Series bridges the gap between the requirements for fire and smoke control and ease of operation required for accessibility.



Adjustments: 1 - Closing power; 2 - Closing speed; 3 - Latch action; 4 - Backcheck

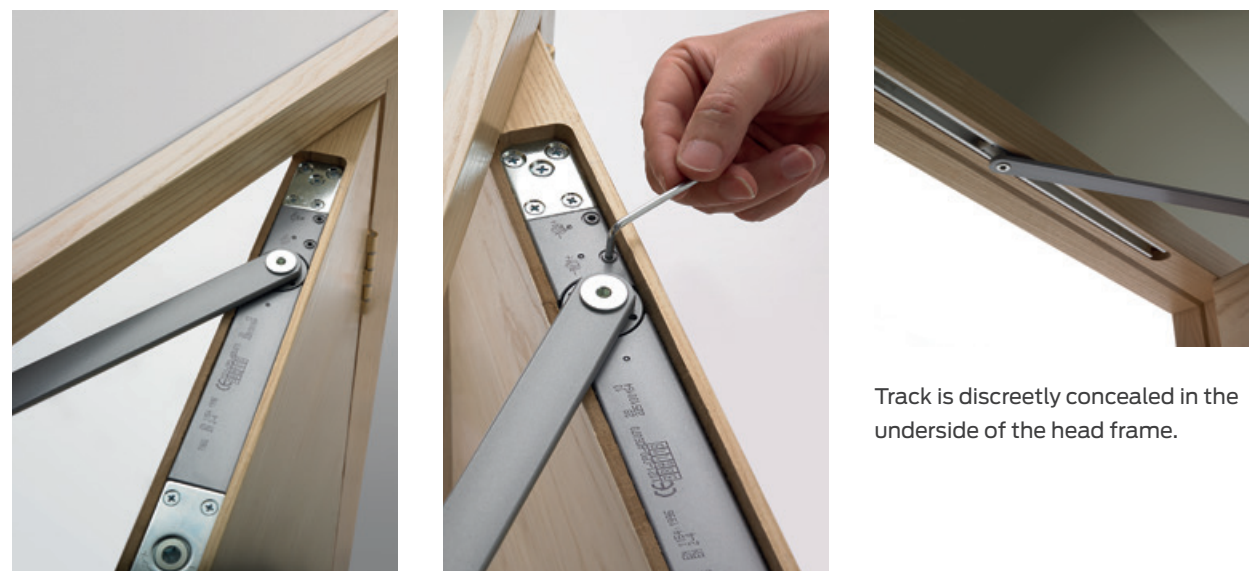
## Highly efficient, compact and concealed

### Principal Features & Benefits

- A Compact extruded aluminium body which requires minimal removal of material from the door and frame.
- B High performance cam action technology is extremely efficient, providing reliable closing but easy to open
- C Needle roller bearings provide increased bearing load for efficient operation and improved reliability.
- D Power adjustment allows installers to adjust the spring power to suit the size and location of the door
- E Silicon chrome alloy steel springs for superior strength and reliability.
- F High quality hydraulic fluid with built-in temperature compensation ensures reliable performance without the need for seasonal adjustment.
- G Aluminium slide track 23mm wide with nylon runner
- H Powder coated steel track arm
- J Optional cushion stop helps to prevent doors from opening beyond the limit of the door closer - please note, this is not a backcheck facility

Factory preparation is recommended to ensure the minimum amount of door and frame material is removed and to ensure an accurate installation.

Briton 2400 Series door closers are packed complete, reducing the possibility of lost or missing parts.



Track is discreetly concealed in the underside of the head frame.

### Testing & Certification

CE marked to EN1154 (AD5114)

Fire tested to EN1634 on timber doors to achieve up to 90 minute fire rating when used in conjunction with the intumescent pack 2420.IP

FD30 - Min. door thickness 44mm

FD60 - Min. door thickness 54mm

FD90 - Min. door thickness 58mm

Full Declaration of Performance available from our website at:

[www.britondops.co.uk](http://www.britondops.co.uk)

### What's in the box?

- Closer Body
- Armset and Track
- Fixing Pack
- Installation Instructions



2400 Series – Cam Action Door Closers

Product features		Product references
EN Closer size	max. door size [width - weight]	2420T
1	750mm - 20kg	
2	850mm - 40kg	■
3	950mm - 60kg	■
4	1100mm - 80kg	■
5	1250mm - 100kg	
6	1400mm - 120kg	
CE marked and EN 1154 compliant		■
Variable closing power EN size		2 - 4
Min. door thickness for FD60 doors		54mm
Max. angle of opening		120°
Separate closing speed & latch action adjustment		■
Adjustable backcheck		
In-built temperature compensation		■
Cushion stop		□
Hold open facility		□
Arm & track finish		Silver, SS or PS
Dimensions (L x D x H mm)		242 x 42 x 32
Channel/slide arm		440 x 17
Finishes (arm)		SS; PS; SE
Warranty period		10yrs
CE Classification		3 8 2-4 1 1 3

■ Feature as standard    □ Available as an option

Intumescent gasket set (2420.IP)

A significant amount of fire resisting doorset material is removed when concealed closers are mortised into the door leaf. The intumescent gasket set will provide the additional performance that is required to protect the door from integrity failure during fire conditions.

It is particularly important with these closers to check that the details of the fire test certification are relevant to your intended door application.

Additional features

Optional cushion stop (ref: 2420.CS) helps prevent doors from coming into contact with adjacent walls (note: this is not a backcheck function).

Optional mechanical hold-open unit can be retrofitted into the slide track. Hold-open angle can be adjusted from 80° to 120° and allows the door to be manually released from the hold-open position.

Mechanical hold-open must not be used on fire and smoke doors.

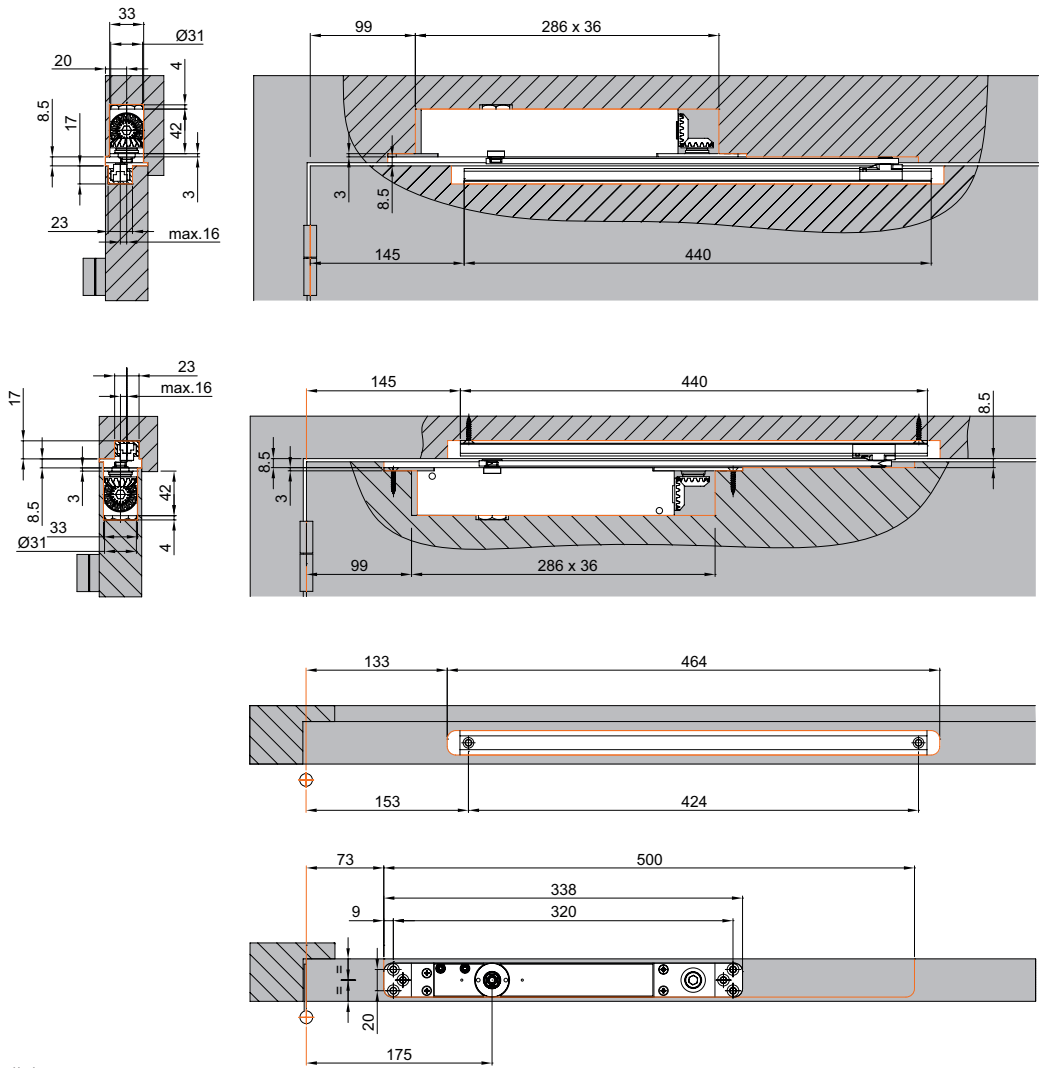
Door Mounted

Closer body mounted in the top of the door leaf and the slide track in the underside of the head frame.



Transom Mounted

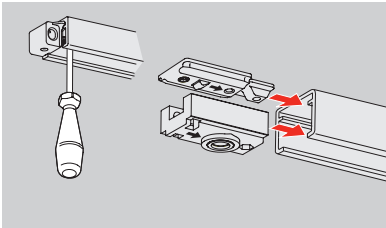
Closer body mounted in the underside of the transom and the slide track in the top of the door.



all dimensions are in mm

Product Ref:	Description	Mounting Position	Finishes
2420T	Closer with backcheck, slide in trimplate - adjustable power EN size 2 - 4	Door mounted or transom mounted	SE; SS; PS

Product Ref:	Accessories & Parts	Mounting Position	Finishes
2400.AP.PS	Arm pack	-	PS
2400.AP.SE	Arm pack	-	SE
2400.AP.SS	Arm pack	-	SS
2420.CS	Optional cushion stop	Mounted in the slide track	N/A
2420.HP	Optional mechanical hold-open kit	Mounted in the slide track	N/A
2420.IP	2mm thick Intumescent pack - required for fire door applications		N/A
Please note; Cushion stop and mechanical hold-open cannot be used together			



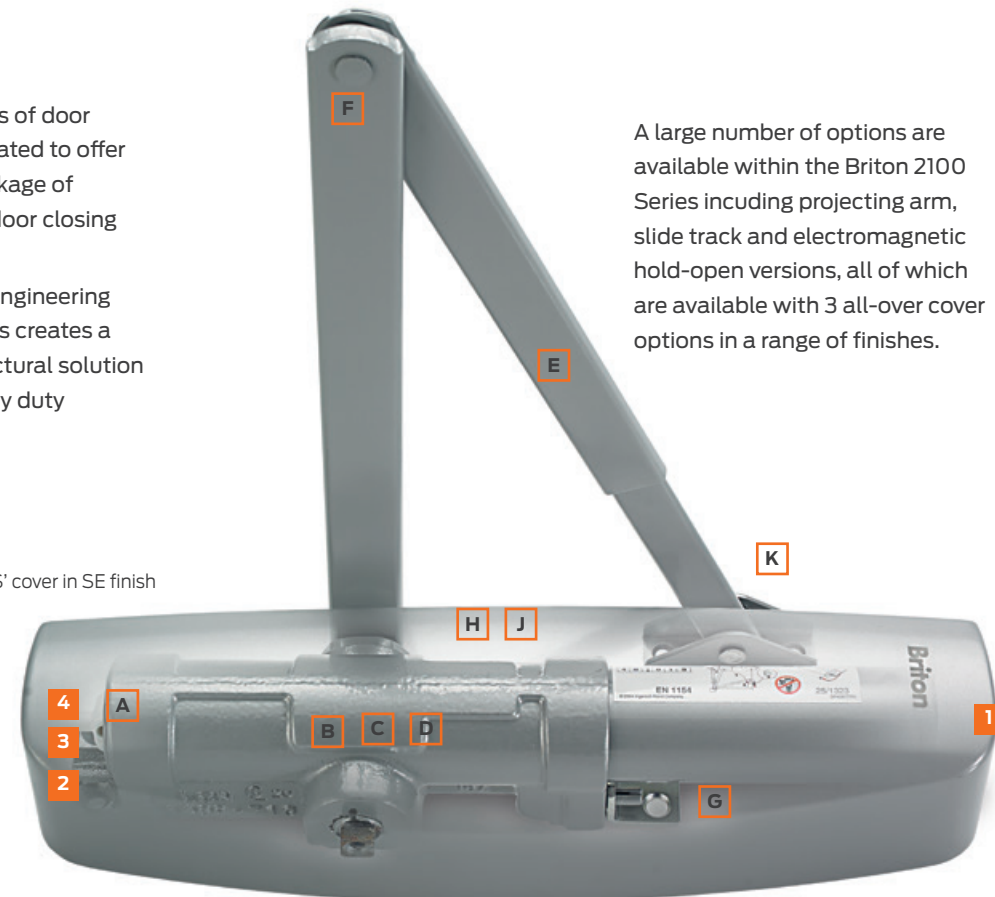


## 2100 Series - Severe Duty Closers (Level 5-3)

The Briton 2100 Series of door controls has been created to offer a comprehensive package of solutions to suit any door closing application.

This combination of engineering quality and good looks creates a truly versatile architectural solution for any severe or heavy duty application.

Briton 2130B closer with 'S' cover in SE finish



A large number of options are available within the Briton 2100 Series including projecting arm, slide track and electromagnetic hold-open versions, all of which are available with 3 all-over cover options in a range of finishes.

Adjustments: 1 - Closing power; 2 - Closing speed; 3 - Latch action; 4 - Backcheck

### Installation made quick and easy

The efficiency and durability of an overhead door control is greatly improved by accurate installation. The Briton 2100 Series is supplied with the Accufit self adhesive template which not only speeds up the installation process but provides a means of accurately aligning the closer and track on the door and frame.



Available with 3 cover options - showing 'C' cover in silver finish, 'L' cover in polished stainless steel and 'S' cover in satin stainless steel.

## Easy installation, superior performance

### Principal Features & Benefits

- A Cast iron (2130) or cast aluminium body (2110/2120) providing high levels of durability and long life performance
- B Hardened steel rack & pinion mechanism with needle roller bearings for exceptionally smooth and efficient operation and high levels of durability
- C Silicon chrome alloy steel springs for superior strength and reliability.
- D High quality hydraulic fluid with built-in temperature compensation ensures reliable performance without the need for seasonal adjustment
- E Pre-assembled arm and bracket simplifies assembly, increasing speed and accuracy of installation
- F Quick release arm allows the closer to be disconnected and reconnected without altering the arm geometry. It also allows the bracket to be fixed without being under tension from the closer
- G Unique self-adhesive 'Accufit' installation template and mounting plate with dowel fixings to position the closer body ensures a quick, simple and accurate installation.
- H 3 all over cover options conceal all fixings and adjustment screws to prevent tampering
- J Cover options in a range of architectural finishes with matching armset
- K Bracket and armset suitable for mounting in Fig.1, Fig.61 and Fig.66 as standard (projecting armset variants)

### Installation made quick and easy

The Accufit System was developed with installers to facilitate accurate fitting and save time in installation. The Accufit System on the Briton 2100 Series has a self adhesive template, mounting bracket and pre-assembled arm that enables the door closer to be fitted quickly and accurately, greatly enhancing the life of the product.



### Testing & Certification

CE marked to EN1154 - AD0016 (Briton 2110)  
- AD0017 (Briton 2120B)  
- AD0031 (Briton 2130B)  
- AD0032 (Briton 2130B.T)

CE marked to EN1155 for electromagnetic variants

Fire tested to EN1634 on timber doors to achieve a 2 hour fire rating, and 4 hours for metal doors (1 hr when used with Classic cover) .

Certifire Approved CF111

Full Declaration of Performance available from our website at:

[www.britondops.co.uk](http://www.britondops.co.uk)



### What's in the box?

- Closer Body
- Body Cover
- Armset and Bracket
- Fixing Pack
- Accufit template and backplate
- Installation Instructions

2100 Series - Electromagnetic Hold-open



The electromechanical Briton 2130B.TE closer houses an electromagnet in the slide track that is designed to hold the door open during normal use and is connected to the building fire alarm system. On sounding the fire alarm, or in the event of power failure, the electromagnet is deactivated and releases the door closer mechanism to close the door in the normal controlled manner.

It is particularly suited for use in areas where a standard door closer could be inconvenient or would impede the flow of people in medium or high traffic applications such as a cinema foyer or hospital corridor. The use of electromagnetic hold-open door controls is recommended in applications which are designed to meet the levels of accessibility called for in Approved Document M Access to and use of buildings.

Power requirements

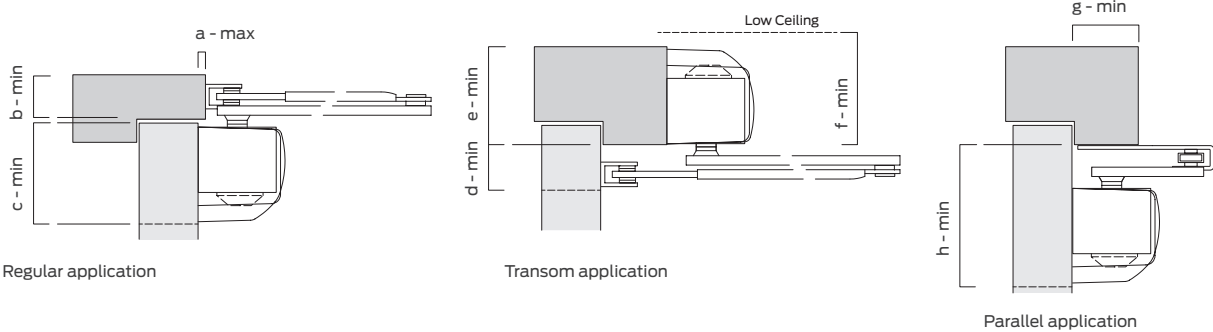
The closer power requirements are 24V DC, 90mA nominal. Transformers and relay interfaced to the fire alarm system can also be supplied to link the electricity supply and the fire alarm system.

Features of the Briton 2130B.TE closer

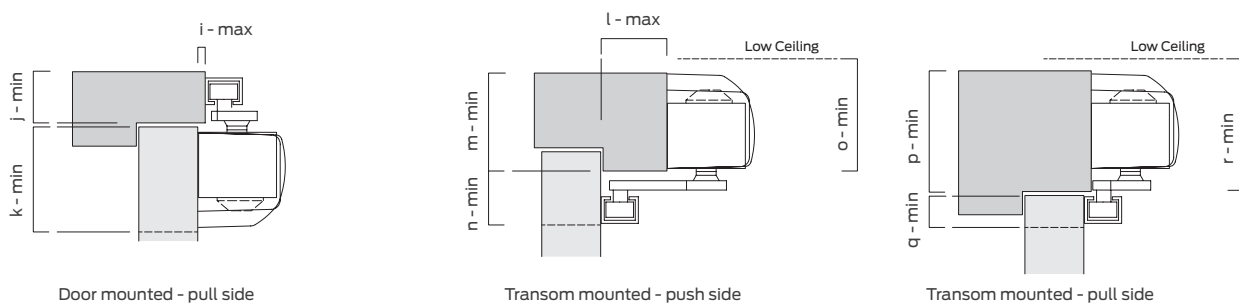
- Fully compliant with EN 1155.
- Satisfies the requirements of Approved Document M Access to and use of buildings
- Fail safe electronics guarantee door release in the event of a fire or power failure.
- Track mounted 24v DC electromagnet with an effective and reliable holding force.
- Manual override allows the door to be pulled closed at any time.
- On-board test switch simulates fire condition to check operation.
- Fully adjustable hold-open angle from 85° to 110°.
- 24v transformer/rectifier available.

2100 Series Installation Parameters

Closers with projecting arms (all cover options shown)



Closers with track arms (all cover options shown)



all dimensions are in mm

closer ref.	body cover								
		a	b	c	d	e	f	g	h
2110 2120	L	10	26(39)	62	28(39)	52	62	44	99(112)
	S	10	26(39)	74	28(39)	52	74	44	112(124)
	C	7	28(41)	55	28(42)	50	68	44	94(107)
2130B 2130BD	L	7	28(41)	78	30(43)	55	78	44	117(130)
	S	7	28(41)	78	30(43)	55	78	44	117(130)

Figures in brackets refer to dimensions when used with mechanical hold-open armsets

closer ref.	body cover										
		i	j	k	l	m	n	o	p	q	r
2130B.T 2130B.TE	C	12	41	78	76	55	45	78	75	22	95
	L	12	41	78	76	55	45	78	75	22	95
	S	12	41	78	76	55	45	78	75	22	95



Mechanical hold-open armset option (2110 & 2120)



Mechanical hold-open armset option (2130)

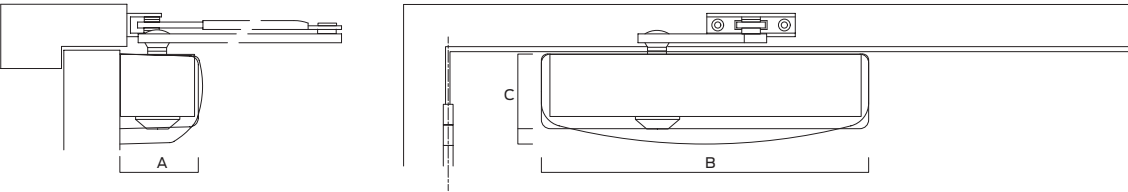
2100 Series - Quick Selector

Product features		Product references					
EN Closer size	max. door size [width - weight]	2110	2120B	2130B	2130BD	2130B.T	2130B.TE
1	750mm - 20kg						
2	850mm - 40kg						
3	950mm - 60kg						
4	1100mm - 80kg						
5	1250mm - 100kg						
6	1400mm - 120kg						
CE marked					N/A		
Variable closing power EN size		2 - 4	1 - 4	2 - 6	2 - 6	2 - 4	3 - 4
Power adjustment by spring or template		template	spring	spring	spring	spring	spring
Accufit template & Accufit mounting plate							
Max. angle of opening (controlled closing)		180°	180°	180°	180°	180°	110°
Adjustable closing speed & latch action							
Adjustable backcheck							
Adjustable delayed action							
Tri-pack armset (projecting arm closers)							
Slide channel and arm							
Mechanical hold-open facility							
Electro-magnetic hold-open facility							
Cover variants available (C; L; S)		L/S	L/S	C/L/S	C/L/S	C/L/S	C/L/S
Finishes		SSS; PSS; PBS; SES + Powder Coated Normbau Colours (see page 74)					
Guarantee period		10yrs	10yrs	10yrs	10yrs	10yrs	10yrs/2yrs
CE Classification		4 82-4113	4 81-4113	4 82-6113	4 82-6013	4 82-4113	3 83-4113

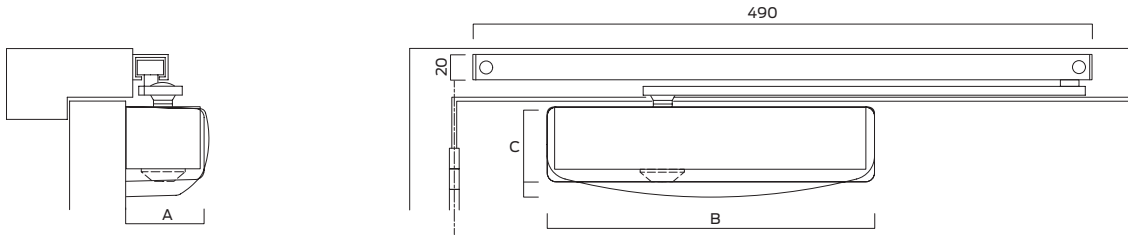
■ Feature as standard    □ Available as an option

Product Ref:	Description	Cover Option	Finishes
2110.L	Projecting arm closer - template adjustable EN 2 - 4	L cover	
2110.S	Projecting arm closer - template adjustable EN 2 - 4	S cover	
2120B.L	Projecting arm closer - spring adjustable EN 1 - 4 - with backcheck	L cover	
2120B.S	Projecting arm closer - spring adjustable EN 1 - 4 - with backcheck	S cover	
2130B.C	Projecting arm closer - spring adjustable EN 2 - 6 - with backcheck	C cover	
2130B.L	Projecting arm closer - spring adjustable EN 2 - 6 - with backcheck	L cover	SSS; PSS;
2130B.S	Projecting arm closer - spring adjustable EN 2 - 6 - with backcheck	S cover	PBS; SES
2130BD.C	Projecting arm closer - spring adjustable EN 2 - 6 - with backcheck & delayed action	C cover	+ Powder
2130BD.L	Projecting arm closer - spring adjustable EN 2 - 6 - with backcheck & delayed action	L cover	Coated
2130BD.S	Projecting arm closer - spring adjustable EN 2 - 6 - with backcheck & delayed action	S cover	Normbau
2130B.T.C	Track arm closer - spring adjustable EN 2 - 4 - with backcheck	C cover	Colours
2130B.T.L	Track arm closer - spring adjustable EN 2 - 4 - with backcheck	L cover	
2130B.T.S	Track arm closer - spring adjustable EN 2 - 4 - with backcheck	S cover	
2130B.TE.C	Track arm electromag hold-open closer - spring adjustable EN 3 - 4 - with backcheck	C cover	
2130B.TE.L	Track arm electromag hold-open closer - spring adjustable EN 3 - 4 - with backcheck	L cover	
2130B.TE.S	Track arm electromag hold-open closer - spring adjustable EN 3 - 4 - with backcheck	S cover	

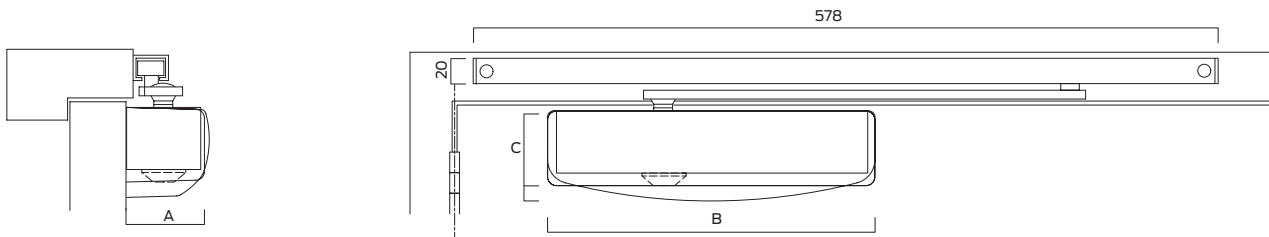
Closer with projecting arm and L, S or C cover



Closer with track arm and L, S or C cover



Closer with electro-magnetic track arm and L, S or C cover



all dimensions are in mm

Product Ref:	Accessories & Parts	Finishes
2110.AP	Arm pack for 2110 and 2120B	SE; SS; PS; PB
2110.APH	Hold-open arm pack for 2110 and 2120B	SE; GE; SS
2110.BP	Backplate pack for 2110 and 2120B	n/a
2110.BRK66	Fig. 66 bracket pack	BM; SE; GE; SS
2110.FP.ZP	Fixing pack	SV
2110.T.AP	Track arm pack for 2110 and 2120B	SE
2130.AP	Arm pack for 2130B and 2130BD	BM; SE; SS; PB
2130.APH	Hold-open arm pack for 2130B and 2130BD	SE; GE
2130.BP	Bracket pack for 2130B and 2130BD	N/A
2130.FP.ZP	Fixing pack	SV
2130.H.BRK66	Fig. 66 hold-open bracket pack for 2130B	SE
2130.T.AP	Track arm pack for 2130B and 2130BD	BM; SE; SS; PS
2130.T.FP	Track arm fixing pack	SV
2130.T.FPS	Security fixing pack	SV
2130.TE. AP	Electromagnetic track arm pack	SE; SS

closer ref.	cover	A	B	C
2110 2120B	L	62	258	59
	S	65	258	71
2130B 2130BD 2130B.T 2130B.TE	C	66	310	55
	L	62	318	74
	S	71	318	76



## 2000 Series - Heavy/Medium Duty Closers (Level 3-2)

The Briton 2000 Series offers adjustable and fixed strength power sizes providing a comprehensive package of solutions to suit most door closing applications.

When the situation of use and the door size and weight is known, fixed strength closers provide an economic solution. With little on-site adjustment needed, installation is quick and trouble-free.

The adjustable power 2003V provides the flexibility to 'fine tune' the closing power of the door control in order to achieve the low 'opening forces' necessary to satisfy the requirements of Approved Document M of The Building Regulations and the guidance of BS 8300 in relation to The Equality Act (2010).



Briton 2003T.SSS slide track closer with matching track and arm in satin stainless steel. For full details of finishes please refer to page 74.

Adjustments: 1 - Closing power; 2 - Closing speed; 3 - Latch action; 4 - Backcheck

## Reliable, fixed strength and adjustable power closers

### Principal Features & Benefits

- A Cast aluminium body.
- B Steel rack and pinion mechanism is heat treated for strength and durability.
- C Forged, heat treated and ground steel piston for rugged durability.
- D High quality hydraulic fluid with built-in temperature compensation ensures reliable performance without the need for seasonal adjustment.
- E Stylish flatarm arm in finish to match door closer cover.
- F The mechanism is safety valve protected to prolong the life of the closer against abuse and misuse.
- G Precision needle roller bearings for optimum performance and efficiency.
- H Classic fabricated cover conceals fixings and adjustment screws, reducing the risk of vandalism. Available in a range of architectural finishes with matching arms or track to complement a variety of door hardware ranges.
- J Briton badge of authenticity.
- K Accufit template increases the accuracy of installation and helps to reduce installation time.



Briton 2003V power adjustment



Mechanical hold-open armset

### Testing & Certification

- CE marked to EN1154 - AD0013 (Briton 2003)  
 - AD0014 (Briton 2004)  
 - AD0015 (Briton 2003.T)  
 - AD0168 (Briton 2003V)

Fire tested to EN1634 on timber doors to achieve a 2 hour fire rating, and 4 hours for metal doors.

Certifire Approved CF111

Full Declaration of Performance available from our website at:

[www.britondops.co.uk](http://www.britondops.co.uk)

### What's in the box?

- Closer Body
- Body Cover
- Tri-Pack Armset and Brackets
- Fixing Pack
- Installation Instructions



Except 2003

2000 Series – Quick Selector

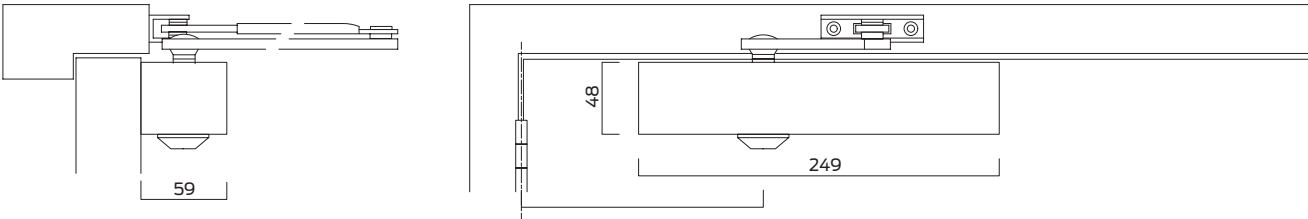
Product features		Product references			
EN Closer size	max. door size [width - weight]	2003	2003T	2003V	2004
1	750mm - 20kg			■	
2	850mm - 40kg			■	
3	950mm - 60kg	■	■	■	
4	1100mm - 80kg			■	■
5	1250mm - 100kg				
6	1400mm - 120kg				
CE marked		■	■	■	■
Fixed closing power EN size		3	3		4
Adjustable closing power EN size				1 - 4	
Accufit installation template		■	■	■	■
Maximum angle of opening (controlled closing)		180°	180°	180°	180°
Adjustable closing speed & latch action		■	■	■	■
Adjustable backcheck				■	
Tri-pack armset		■		■	■
Mechanical hold-open facility		□		□	□
Projecting arm closer		■		■	■
Slide channel and arm			■		
Cover variants available		C (classic)	C (classic)	C (classic)	C (classic)
Finishes		SSS; PSS; PBS; SES + Powder Coated Normbau Colours (see page 74)			
Guarantee period		10yrs	10yrs	10yrs	10yrs
CE Classification		4 8 3 1 1 3	4 8 3 1 1 3	4 8 1-4 1 1 3	4 8 4 1 1 3

■ Feature as standard    □ Available as an option

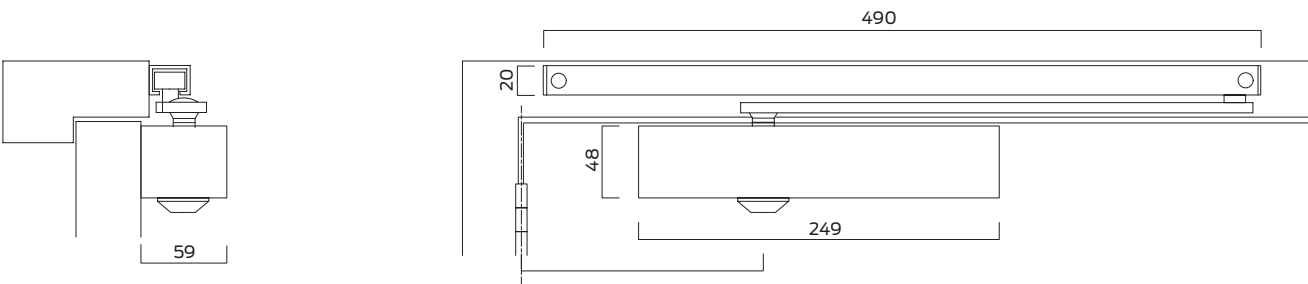
Product Ref:	Description	Cover Option	Finishes
2003	Projecting arm closer - fixed power size EN 3	C cover	SSS; PSS; PBS; SES + Normbau Colours
2003.T	Slide track closer - fixed power size EN 3	C cover	
2003V	Projecting arm closer - spring adjustable EN 1 - 4 - with adjustable backcheck	C cover	
2004	Projecting arm closer - fixed power size EN 4	C cover	

Product Ref:	Accessories & Parts	Finishes
2000.AP	Arm pack for Briton 2000 Series	SE; SS; PB + Normbau Colours
2000.APH	Hold-open arm pack for 2000 Series	
2110.BP	Backplate pack	SE
2110.BRK66	Fig. 66 bracket pack	BM; GE; SE; SS
2110.FP.ZP	Fixing pack	SV

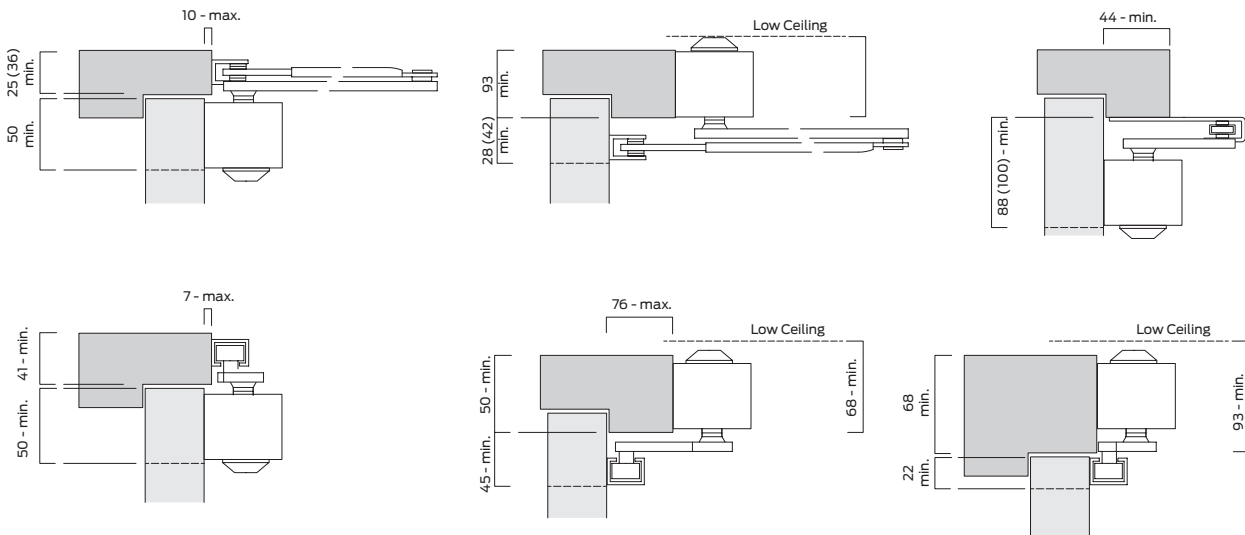
Closer with projecting arm & Classic cover



Closer with track arm & Classic cover



all dimensions are in mm



all dimensions are in mm  
Dimensions in brackets are for hold-open armsets

## 1100 Series – Medium Duty Closers (Level 3-2)

The Briton 1100 Series is designed to provide a mid-range product with a choice of the most popular options, in a concise, cost-effective package. The Briton 1100 Series is a simple system which comprises 3 body sizes, each available as standard with a slide-in trimplate or with optional Classic square or Softline all-over covers.



Briton 1110.SES with trimplate

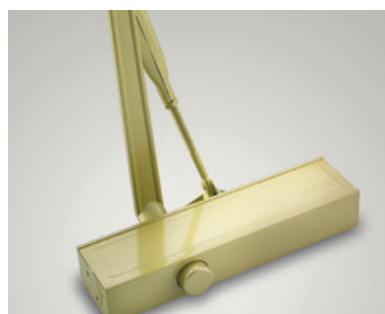
Adjustments: **1** - Closing power; **2** - Closing speed; **3** - Latch action; **4** - Backcheck

The combinations of performance and cover options provides a highly comprehensive series of closers which can be suited across a wide range of functions and applications. Note: All covered variants have a flat arm as standard. All trimplate variants have screw thread arms as standard.



Top Left: Briton 1110.T.S.SS track closer with Softline cover in satin stainless steel

Top Right: Briton 1110.C.SS with Classic cover in satin stainless steel



Below Right: Briton 1120B.GES with trimplate in sprayed gold finish

A comprehensive family of closers which allows suiting across a wide range of performance variants

### Principal Features & Benefits

- A Cast aluminium body
- B Precision needle roller bearings allied with rack and pinion mechanism provides efficient operation and high levels of durability.
- C High quality silicon chrome alloy steel used for the coil spring.
- D High quality hydraulic fluid with built-in temperature compensation ensures reliable performance without the need for seasonal adjustment
- E Screw thread armset manufactured from forged steel for additional strength and durability supplied for all trimplate variants.  
Simple flat arm and bracket set for all-over cover variants
- F Available with snap joint arm for quick and easy installation and future maintenance.
- G All-over cover option to conceal all fixings and adjustment screws providing a neat appearance and reducing the risk of vandalism and tampering. Available in classic square or rounded softline variants.
- H Trimplate option is a simple and cost effective means of concealing fixing and adjustment screws reducing the risk of vandalism and tampering.

### Testing & Certification

CE marked to EN1154 - AD0033 (Briton 1110)  
- AD0034 (Briton 1120B)  
- AD0113 (Briton 1130B)

CE marked to EN1155 for electromagnetic hold-open variants

Fire tested to EN1634 on timber doors to achieve a 2 hour fire rating, and 4 hours for metal doors

Certifire Approved CF388

Full Declaration of Performance available from our website at:

[www.britondops.co.uk](http://www.britondops.co.uk)

### What's in the box?

- Closer Body
- Body Cover/Trimplate
- Tri-Pack Armset and Brackets
- Fixing Pack
- Installation Instructions



Except  
1100





Electromagnetic hold-open variant is available in trimplate or with all-over Softline cover



- Features of the Briton 1130B.TE closer
- Fully compliant with EN 1155
  - Satisfies the requirements of Approved Document M
  - Fail safe electronics guarantee door release in the event of a fire or power failure
  - Track mounted 24v DC electromagnet with an effective and reliable holding force
  - Manual override allows the door to be pulled closed at any time
  - On-board test switch simulates fire condition
  - Fully adjustable hold-open angle from 75° to 110°
  - 24v transformer/rectifier available

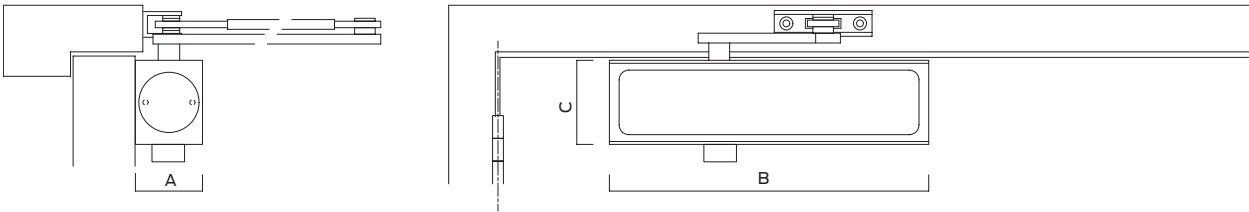
Briton 1130B.TE Electro-magnetic hold-open

An electromagnet in the slide track is designed to hold the door open during normal use and is connected to the building fire alarm system. On sounding the fire alarm, or in the event of power failure, the electromagnet is deactivated and releases the door closer mechanism to close the door in the normal controlled manner.

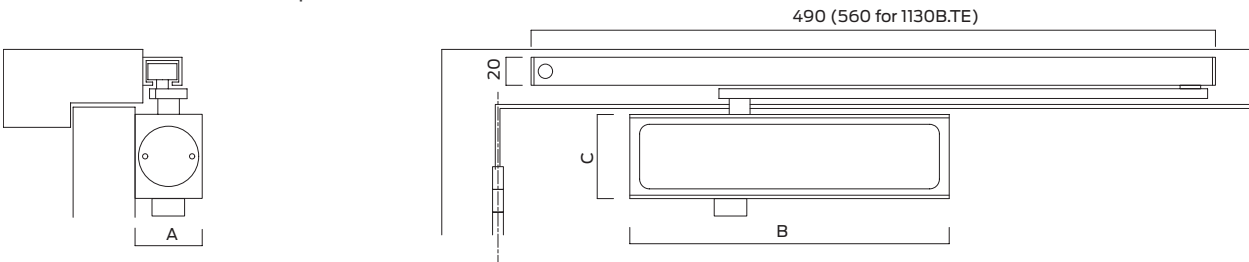
It is particularly suited for use in areas where a standard door closer could be inconvenient or would impede the flow of people in medium or high traffic applications such as a cinema foyer or hospital corridor.

The use of electro-magnetic hold-open door controls are recommended in applications which are designed to meet the levels of accessibility called for in Approved Document M Access to and use of buildings.

Closer with projecting arm & trimplate



Closer with track arm & trimplate



	1110	1110.T	1120B	1130B	1130B.T	1130B.TE
A	38.5	38.5	38.5	48	48	48
B	207	207	236	257	257	257
C	60	60	60	60	60	60

Additional features

Optional mechanical hold-open unit can be used to replace the standard armset on projecting arm closers or retrofitted into the slide track. Hold-open angle can be adjusted from 80° to 120° and allows the door to be manually released from the hold-open position.

Mechanical hold-open must not be used on fire and smoke doors.



Mechanical hold-open armset option for projecting arm variants



Mechanical hold-open conversion kit for slide track variants

1100 Series – Quick Selector

Product features		Product references					
EN Closer size	max. door size [width - weight]	1110	1120B	1130B	1110.T	1130B.T	1130B.TE
1	750mm - 20kg						
2	850mm - 40kg	■	■	■		■	
3	950mm - 60kg	■	■	■	■	■	■
4	1100mm - 80kg	■	■	■		■	■
5	1250mm - 100kg			■			
6	1400mm - 120kg			■*			
CE marked		■	■	■	■		■
Fixed closing power EN size					3		
Adjustable closing power EN size		2 - 4	2 - 4	2 - 6*		2 - 4	3 - 4
Maximum angle of opening (controlled closing)		105°	180°	180°	180°	180°	105°
Adjustable closing speed & latch action		■	■	■	■	■	■
Adjustable backcheck			■	■		■	■
Tri-pack armset (projecting arm closers)		■	■	■			
Mechanical hold-open facility		□	□	□		□	
Electro-magnetic hold-open							■
Slide channel and arm					■	■	■
Trimplate cover option		■	■	■	■	■	■
All over cover variants available	all variants available with C (classic) / S (softline) cover options						
Finishes	SE; SES; GES (trimplate variants) - SES; GES; SSS; PSS; PBS (all covered variants)						
Guarantee period		10yrs	10yrs	10yrs	10yrs	10yrs	10yrs
CE Classification		3 82-4113	4 82-4113	4 82-6113	4 83113	4 82-4113	3 83-4113

■ Feature as standard    □ Available as an option

A wide choice of cover and finish options



Product Ref:	Description	Cover Option	Finishes
1110	Projecting arm closer - template adjustable EN 2 - 4	Trimplate	SE; SES; GES
1110.C	Projecting arm closer - template adjustable EN 2 - 4	C cover	SES; GES; SSS;
1110.S	Projecting arm closer - template adjustable EN 2 - 4	S cover	PSS; PBS
1110.T	Slide track closer - fixed power EN3	Trimplate	SES; GES
1110.T.C	Slide track closer - fixed power EN3	C cover	SES; SSS; PSS;
1110.T.S	Slide track closer - fixed power EN3	S cover	PBS
1120B	Projecting arm closer - spring adjustable EN 2 - 4 - with backcheck	Trimplate	SES; GES
1120B.C	Projecting arm closer - spring adjustable EN 2 - 4 - with backcheck	C cover	SES; SSS; PSS;
1120B.S	Projecting arm closer - spring adjustable EN 2 - 4 - with backcheck	S cover	PBS
1130B	Projecting arm closer - spring adjustable EN 2 - 6 - with backcheck	Trimplate	SES; GES
1130B.C	Projecting arm closer - spring adjustable EN 2 - 6 - with backcheck	C cover	SES; SSS; PSS;
1130B.S	Projecting arm closer - spring adjustable EN 2 - 6 - with backcheck	S cover	PBS
1130B.TE	Track arm electromag hold-open closer - spring adjustable EN 3- 4 - with backcheck	Trimplate	SES; GES
1130B.TE.S	Track arm electromag hold-open closer - spring adjustable EN 3- 4 - with backcheck	S cover	SES; SSS



Product Ref:	Accessories & Parts	Finishes
1110.AP	Arm pack (screwthread) for 1110 & 1120B trimplate closers	SE
1110.APF	Flatform arm pack	SE; SS; PS; PB
1110.APH	Hold-open arm pack for projecting arm closers	BM; GE; SE
1110.T.AP	Track arm pack	SE; SS; PS; PB
1110.BRK66	Fig. 66 bracket pack	SE
1110.FP.ZP	Fixing pack	SE
1130.AP	Arm pack (screwthread) for 1130B trimplate closers	SE
1130.APF	Flatform arm pack for 1130B	SE; SS; PS; PB
1130.APH	Hold-open arm pack for projecting arm closers	BM; GE; SE
1130.F.PLT	Fixing plate	BM; SE; WHS
1130.HP	Hold-open conversion kit for slide track closers	N/A
1130.TPB	Trimplate	SE

## 996 Series - Electromagnetic Hold-open or Swing-free (Level 5)



Parallel mounted version illustrated

Typically used on fire rated doors where the hold-open or swing-free feature is required either in high traffic areas for convenience or in situations where it would be difficult to satisfy the maximum opening force requirements of Part M of The Building Regulations.

Linked to the building's alarm system, electromagnetic door controls eliminate the illegal practice of wedging doors open. This dangerous practice prevents a fire door functioning as it should in stopping the spread of flames and smoke in the event of a fire.

Adjustments: **1** - Closing speed; **2** - Latch action



Briton 9963/01/SE in transom mounting with black arms and bracket

### Primary options

- Fixed power units to suit the most common door sizes
- Site selectable for 'hold-open' or 'swing-free' operation
- Can be installed in regular, transom or parallel mounting
- Cover is visually compatible with Classic C cover and is available in a range of metallic, plated and sprayed finishes
- Extra long armoured loop up to 700mm long available

## Smart, reliable and fire safe

### Principal Features & Benefits

- A** Pressure die cast aluminium body giving rugged durability.
- B** Steel rack and pinion mechanism is heat treated for strength and durability.
- C** High quality silicon chrome alloy steel used for the coil spring.
- D** Armset and brackets for regular or transom mounting (for parallel mounting please specify when ordering)
- E** Fabricated steel cover is available in a range of finishes
- F** 'Catch plate' can be set to operate in hold-open or swing-free mode at the point of installation.
- G** Electromagnet is controlled by the building fire alarm/detector and activates the 'catch plate' to ensure the door closes automatically in the event of a fire or power failure.
- H** Optional rear entry cable allows units to be installed with concealed cable via a concealed loop to protect the closer against vandalism.
- J** Supplied with flexible armoured power loop (330mm long as standard) to run power safely from the door frame to the closer.

### Testing & Certification

CE marked to EN1154 - AE0007 (Briton 9963)  
- AE0008 (Briton 9964)  
- AE0012 (Briton 9965)

CE marked to EN1155 for electromagnetic hold-open variants

Fire tested to EN1634 on timber doors to achieve a 2 hour fire rating.

Certifire Approved CF109

Full Declaration of Performance available from our website at:

[www.britondops.co.uk](http://www.britondops.co.uk)

### What's in the box?

- Closer Body
- Body Cover
- Appropriate Arm and Bracket
- Armoured Loop
- Fixing Pack
- Installation Instructions





996 Series - Quick Selector

Product features		Product references					
EN Closer size	max. door size [width - weight]	9963/01	9963/66	9964/01	9964/66	9965/01	9965/66
1	750mm - 20kg						
2	850mm - 40kg						
3	950mm - 60kg	■	■				
4	1100mm - 80kg			■	■		
5	1250mm - 100kg					■	■
6	1400mm - 120kg						
CE marked (EN 1155)		■	■	■	■	■	■
Fixed closing power EN size		3	3	4	4	5	5
Max. angle of opening (controlled closing)		110°	110°	110°	110°	110°	110°
Adjustable closing speed & latch action		■	■	■	■	■	■
Regular and transom mounting		■		■		■	
Parallel mounting			■		■		■
Hold-open adjustment		■	■	■	■	■	■
Free-swing operation		■	■	■	■	■	■
Cover variants available		Classic	Classic	Classic	Classic	Classic	Classic
Finishes		GE; GES; PB; PBS; PS; PSS; SE; SES; SS; SSS					
Guarantee period		All variants - 10yrs mechanical / 2 years electrical					
CE Classification		3 8 3 1 1 3	3 8 3 1 1 3	3 8 4 1 1 3	3 8 4 1 1 3	3 8 5 1 1 3	3 8 5 1 1 3

■ Feature as standard    □ Available as an option

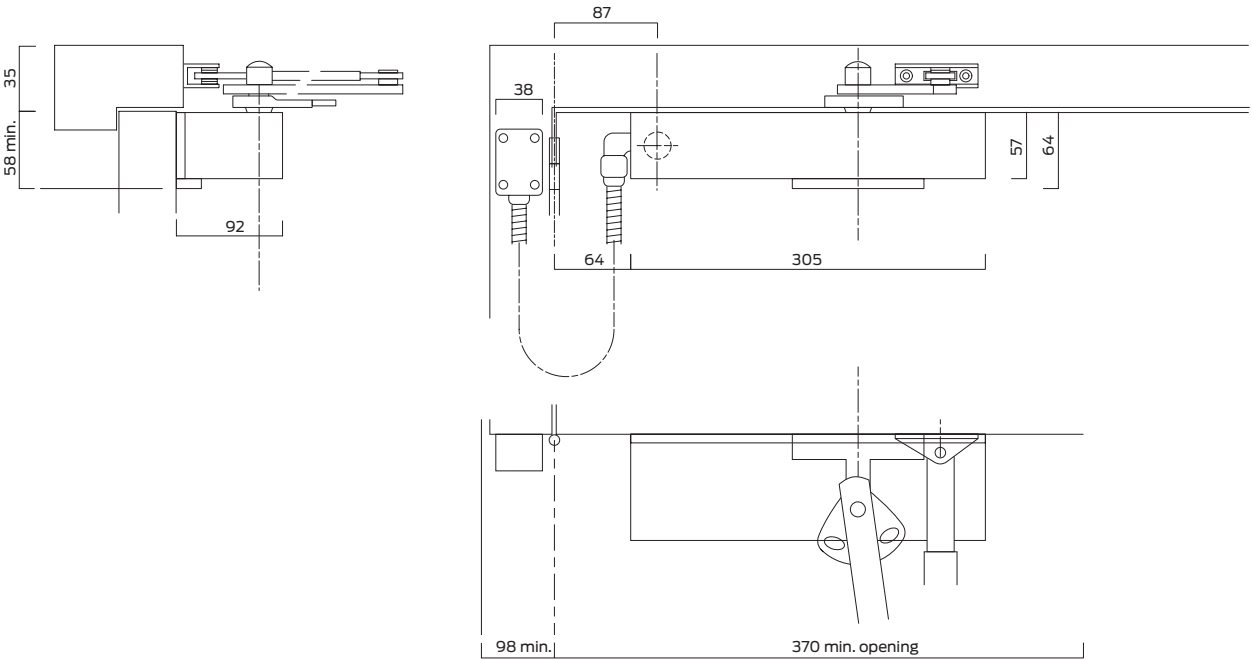
Power requirements

For the operation of the closer the power requirements are 24V DC, 90mA nominal. Transformers and relay interfaced to the fire alarm system can also be supplied to link the electricity supply and the fire alarm system (see chart).

Please note:

It is suggested that all electro-magnetic hold-open door closers be fitted with a release button close to the door frame so that the door can be released without having to manually pull the door away from the hold open mechanism.

Closer in regular mounting with armoured loop



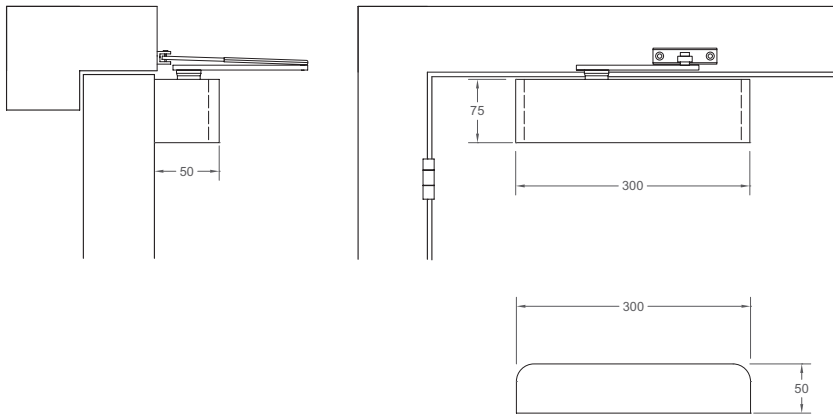
Product Ref:	Description	Mounting Option	Finishes
9963/01	Electromagnetic hold-open/swing-free closer - fixed power EN3	Regular and Transom mount	
9963/66	Electromagnetic hold-open/swing-free closer - fixed power EN3	Parallel mount	GE; GES; PB;
9964/01	Electromagnetic hold-open/swing-free closer - fixed power EN4	Regular and Transom mount	PBS; PS; PSS;
9964/66	Electromagnetic hold-open/swing-free closer - fixed power EN4	Parallel mount	SE; SES; SS;
9965/01	Electromagnetic hold-open/swing-free closer - fixed power EN5	Regular and Transom mount	SSS
9965/66	Electromagnetic hold-open/swing-free closer - fixed power EN5	Parallel mount	

Product Ref:	Accessories & Parts	Finishes
996/BRK66	Fig. 66 bracket pack	BM; SE
996/FP01/ZP	Fixing pack for Briton 996 Fig. 1	SE
996/FP66/ZP	Fixing pack for Briton 996 Fig. 66	SE
996/FLSL/550	Flexible loop for Briton 996 - 550mm long	N/A
996/FLSL/600	Flexible loop for Briton 996 - 600mm long	N/A
996/FLSL/700	Flexible loop for Briton 996 - 700mm long	N/A
996/AP01	Fig. 1 arm pack	BM; SS; SE;
996//AO66	Fig. 66 arm pack	PB
996/863/UF	Magnet for Briton 996	N/A
996/DP66	Drop plate for Briton 996 Fig. 66	BM; SE
996/CP01	Fig. 1 Cover pack	SS; SE; PB;
		GE; PS

3934 - Electromagnetic Hold-open or Swing-free (Level 5)

Typically used on fire rated doors where the hold-open or swing-free feature is required either in high traffic areas for convenience or in situations where it would be difficult to satisfy the maximum opening force requirements of Part M of The Building Regulations.

Each unit can be set to either 'hold-open' or 'swing-free' operation. In either case the spring closing function of the closer can be temporarily disabled to allow free passage. When de-activated via a connection to the building fire alarm or smoke detection system, the electromagnet disengages and the door closer closes the door in the normal manner to maintain fire safety.



Smart, reliable and fire safe

Features & Benefits

- Template adjustable power Size EN 3-4 (see table)
- Stainless steel grade 304 softline cover available in silver and satin steel finishes to suite with Briton 2300 and 2700 closers with softline covers to complement a variety of door hardware ranges.
- Designed for use on low voltage circuits 24V DC linked to a fire alarm
- Solution offering hold-open and free swing
- Easy Installation
- Attractive compact design
- Test switch simulates fire condition of check operation
- When the fire alarm is activated, the door will close automatically from any position to help prevent the spread of fire

Mounting	Power size	Max. door opening	EN Classification
Door mounted	3	180°	3 8 3-4 1 1 3
	4	110°	
Transom mounted	3	180°	3 8 3-4 1 1 3
	4	110°	
Parallel mounted	3	170°	3 8 3 1 1 3

Product Ref:	Description	Mounting Option	Finishes
3934	Electromagnetic hold-open/swing-free closer - Template adjustable EN 3-4	Regular and Transom mount	SSS

Testing & Certification

CE marked to EN1154 - AE5012  
CE marked to EN1155 for electromagnetic hold-open variants  
Fire tested to EN1634 on timber doors to achieve a 2 hour fire rating.  
Certifire Approved CF5598

Full Declaration of Performance available from our website at:  
[www.britondops.co.uk](http://www.britondops.co.uk)

What's in the box?

- Closer Body
- Body Cover
- Appropriate Arm and Bracket
- Armoured Loop
- Fixing Pack
- Installation Instructions



## 2820 Series - Medium Duty Floor Springs (Level 4)

The Briton 2820 Series floor springs are designed for high traffic areas on single or double action doors. These fixed power units are ideally suited to timber, metal and tempered glass doors in areas where a discreet, high quality aesthetic is required, or where a surface mounted closer may be subject to abuse.



Adjustments: **1** - Closing speed (from 130° opening); **2** - Latch action; **3** - Lateral & vertical adjustment of the closer

### Performance

Briton 2820 Series floor springs are mounted within a low profile cement box. They are suitable for single and double action doors with a maximum opening angle of 130° and with optional hold-open facility. Please note: Mechanical hold-open must not be used on fire door applications.



## Low profile floor springs suitable for single or double action single or double doors

### Features & Benefits

- A High grade cast iron floor spring body.
- B Heat treated high alloy steel mechanism with ball bearing race for optimum efficiency.
- C Corrosion resistant galvanised steel, zinc coated and powder coated steel cement box.
- D High quality hydraulic fluid with built-in temperature compensation ensures reliable performance in temperatures from -15 °C to +40 °C without the need for seasonal adjustments.
- E Low profile cement box - only 40mm deep. Closer mechanism adjustment within the cement box for height 4mm, length 7mm and width 10mm.
- F Full adjustment within the cement box for height and lateral positioning for perfect door alignment.
- G Stainless steel cover plate available in satin or polished finish.
- H Hardened steel spindle.
- J Easy access to floor spring adjustments for closing speed and latch action. Adjusters cannot be backed out of the closer body.
- K Spindle cover.
- L Single action and double action accessory packs available.

### Testing & Certification

CE marked to EN1154 - AD0304 (Briton 2823)  
- AD0305 (Briton 2824)

Note: Briton 2822 is NOT CE marked

Fire tested to EN1634 on timber doors to achieve a 1 hour fire rating

Full Declaration of Performance available from our website at:

[www.britondops.co.uk](http://www.britondops.co.uk)

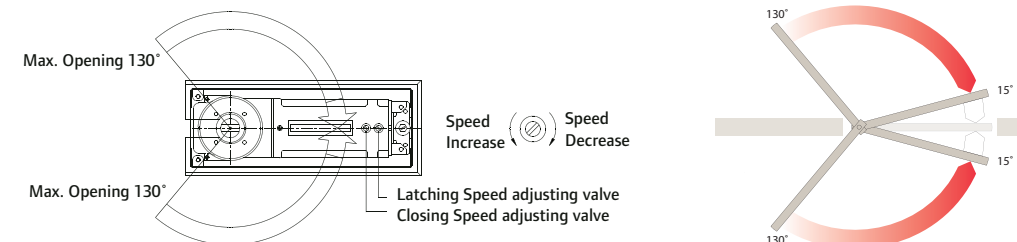


### What's in the box?

- Floor Spring Body
- Cover Trimplate
- Standard Spindle and Spindle Cover
- Cement Box
- Fixing Pack
- Installation Instructions



## 2820 Series - Medium Duty Floor Springs (Level 4)



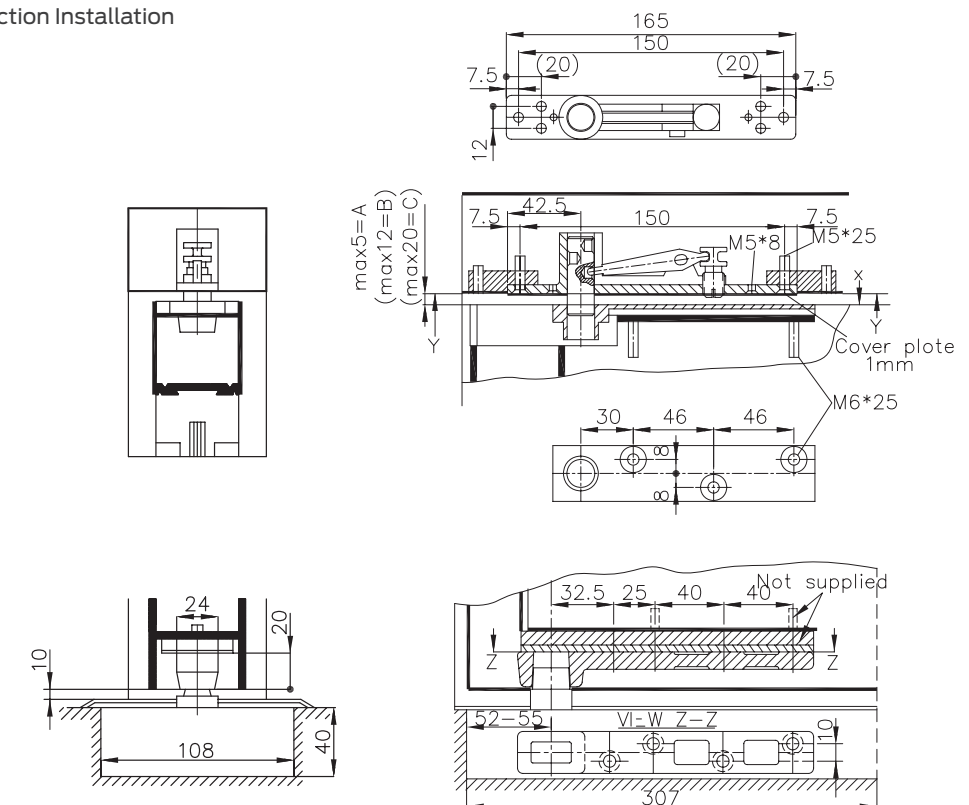
### Primary options

- Fixed power units to suit the most common door sizes EN 2 to EN 4
- Each unit is suitable for single or double action
- Variants are available with built-in hold-open facility at 90° or 105° (These variants are not suitable for use on fire door applications)
- Accessories are available for single or double action
- Single action accessories are supplied with stainless steel cover caps to match the floor spring cover plate

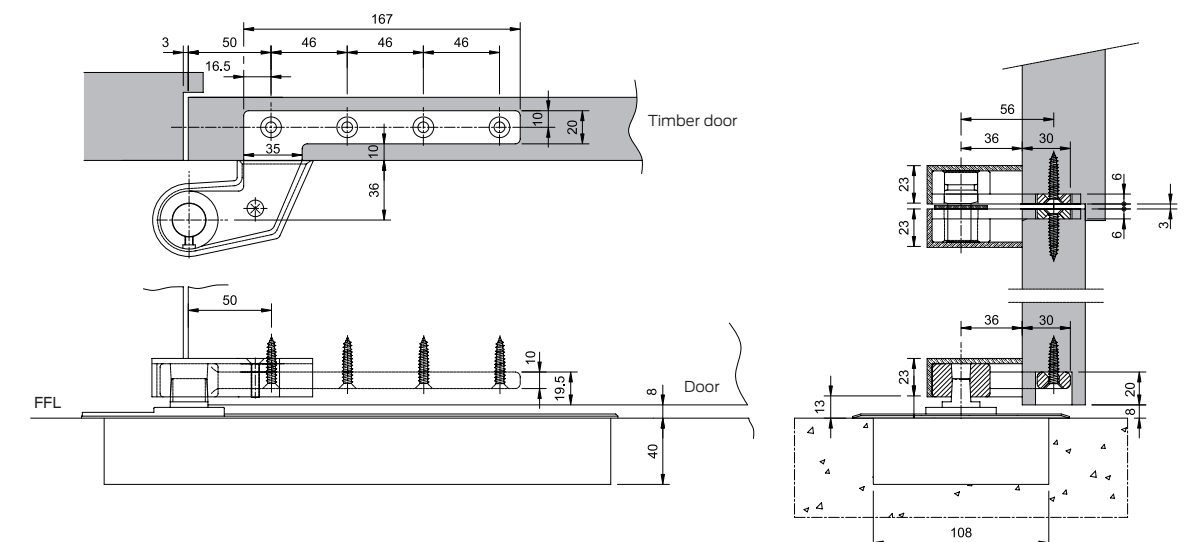
Application	Floor spring	Max. closing force	Max. door width
Light duty	2822*	20Nm	900mm
Med. duty	2823	25Nm	1000mm
Heavy duty	2824	33Nm	1100mm

\* 2822 is not CE marked

### Double Action Installation



### Single Action Installation



2820 Series – Quick Selector

Product features		Product references				
EN Closer size	max. door size [width - weight]	2822.SS	2823.SS	2824.SS	2823. SS.HO.90	2823. SS.HO.105
1	750mm - 20kg					
2	850mm - 40kg	■				
3	950mm - 60kg		■		■	■
4	1100mm - 80kg			■		
5	1250mm - 100kg					
6	1400mm - 120kg					
CE marked						
Fixed closing power EN size		2	3	4	3	3
Conforms to EN 1154		■	■	■	■	■
Suitable for single action doors		■	■	■	■	■
Suitable for double action doors		■	■	■	■	■
Maximum angle of opening (controlled closing)		130°	130°	130°	130°	130°
Adjustable closing speed & latch action		■	■	■	■	■
Mechanical hold-open					■ 90°	■ 105°
Dimensions	cement box 307 x 108 x 40mm; cover plate 325 x 130mm					
Cover plate in satin stainless steel		■	■	■	■	■
Cover plate in polished stainless steel		□	□	□	□	□
Guarantee period		2yrs	10yrs	10yrs	10yrs	10 yrs
CE Classification		4 8 3 1 1 3		4 8 4 1 1 3		

■ Feature as standard    □ Available as an option

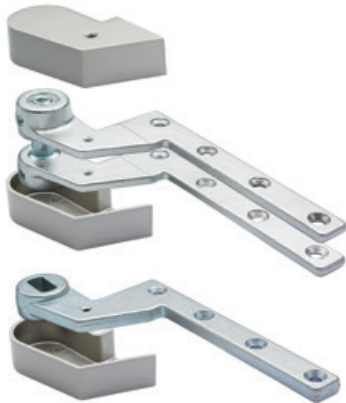
Double Action - Briton 2820 DAP

Two part top pivot accessory with lateral adjustment screw accessed from the edge of door. Top pivot is retractable to allow the door to be installed/removed. Bottom strap to align with floor spring spindle.

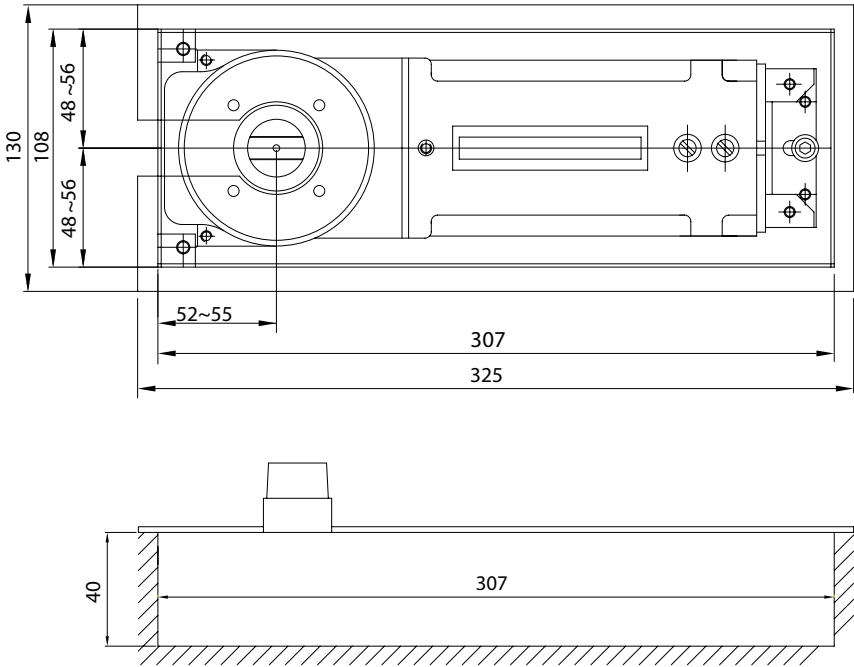


Single Action - Briton 2820 SAP

Two part top pivot accessory with cover caps. This assembly is reversible for left or right hand doors. Bottom strap with cover cap to align with floor spring spindle.



Floor spring dimension (all models)

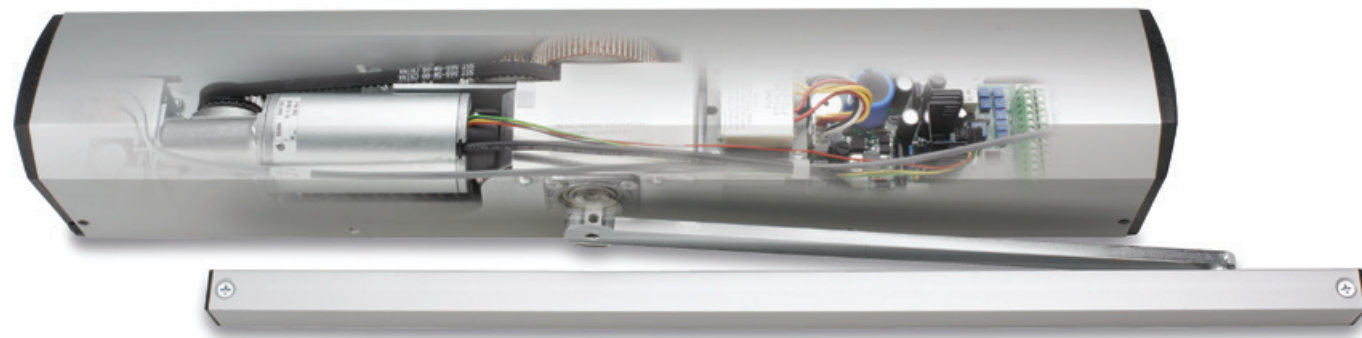


Product Ref:	Description	Finishes
2822	Floor spring - fixed power EN2 (not CE marked)	SS
2823	Floor spring - fixed power EN3	SS; PS
2824	Floor spring - fixed power EN4	SS; PS
2823.SS.HO.90	Floor spring - fixed power EN3 with hold-open facility at 90°	SS
2823.SS.HO.105	Floor spring - fixed power EN3 with hold-open facility at 105°	SS
2820 DAP	Double action accessory pack	SS
2820 SAP	Single action accessory pack	SS
2820.CP.PS	Floor spring cover plate in polished stainless steel	PS
2820.IP.DAP	Intumescent fire protection pack for double action doors and accessories	N/A
2820.IP.SAP	Intumescent fire protection pack for single action doors and accessories	N/A

## 2500 Series – Low Energy Door Operator

The Briton 2500 Series is a power assisted, low energy swing door operator that allows users total freedom from manual door operation. It is designed to provide safe and easy access for all users and can be installed on new or existing inward or outward opening doors.

With an array of built-in safety features, the Low Energy operator is an ideal means of providing easy access from entrance doors through to disabled WC facilities.



Unit with slide track arm for fitting to the pull side of the door.

Adjustments: **1** - Closing speed (from 180°); **2** - Power Boost; **3** - Delayed action from 0 - 30 seconds

The Low Energy operator provides a highly economic solution to the obligation placed on service providers to comply with legislation concerning access for disabled users. This totally self contained unit can be applied to existing hinged or pivoted timber, metal or glazed doors without altering the doors or frames.

Please note, the Briton 2500 Series is suitable for internal doors only.



## Easy access, safe and effective

### Features & Benefits

- Suitable for internal doors only
- The standard Low Energy operator gives precise door control in all conditions, monitoring the door position and allowing simple adjustment of the door operating parameters such as the opening and closing speeds. In addition, provision is made for extra controls including:
- Automatic operation mode (selectable option) allows activation by either motion sensor, manual push pad/plate or via an integrated access control device
- Push & Go (selectable option) allows activation by gently pushing or pulling the door
- Manual operation allows the door to be easily operated as a standard manual door whilst still giving smooth action over the door cycle
- Safety stop halts the door when an object or person is encountered
- Emergency egress allows manual door opening
- Satin anodised aluminium finish

### Principal Modes of Application

The Low Energy operator is surface mounted and is suitable for single or double doors.

Two versions are available:

- With projecting arms for fixing to the 'Push' side of the door
- Using a slide track mounted on the door for fixing to the 'Pull' side of the door

### Testing & Certification

Fire tested to EN1634 on timber doors to achieve a 1 hour fire rating

Full Declaration of Performance available from our website at:

[www.britondops.co.uk](http://www.britondops.co.uk)



### What's in the box?

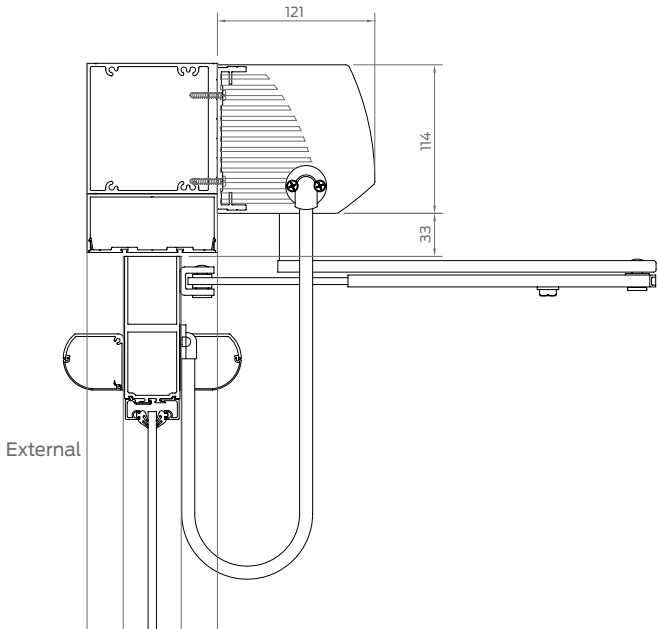
- Operator Body
- Body Cover and End Caps
- Armset and Brackets/Slide Channel
- Fixing Pack
- Installation Instructions



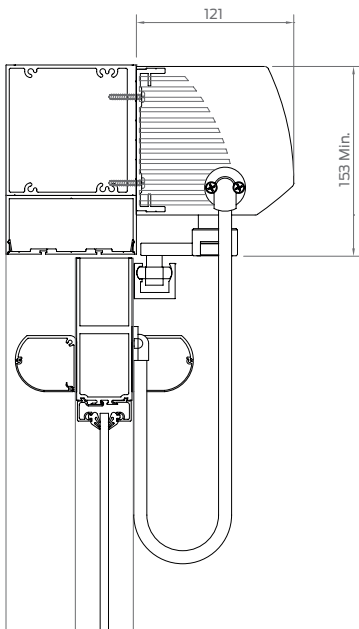
2500 Series – Quick Selector

Product features	Product references	
	2550.C	2550.T.C
CE marked	■	■
Mounted on Pull side of door (with track arm)		■
Mounted on Push side of door (with projecting arms)	■	
Maximum / Min. door width *	1200 / 660mm	1200 / 760mm
Maximum leaf weight	80 kg	80 kg
Adjustable opening & closing speed	■	■
Adjustable delayed closing	1 - 30 seconds	1 - 30 seconds
Power requirements	240V ac ± 10%	
Dimensions	Operator 112 x 121 x 710mm	
Guarantee period	1 year	

■ Feature as standard



Unit with armset for 'Outward Opening' doors



Unit with slide track for 'Inward Opening' doors

all dimensions are in mm

Product Ref:	Description	Finishes
2550.C.SA	Power assisted door operator - with projecting arm for mounting on the push side of the door	SE
2550.T.C.SA	Power assisted door operator - with slide track and arm for mounting on the pull side of the door	SE

Accessories

A selection of accessories is available for use with the Briton operator including rubber finger protection and activation buttons. The addition of safety features such as the Allegion Fingersafe ensures compliance with current safety regulations on swing doors. Not suitable for external doors.



Product Ref:	Accessories & Parts	Finishes
2550.CB	Control box	N/A
2550.FG	Rubber finger guard protection	N/A
2550.FPA.ZP	Fixing pack (Arm only) push	SE
2550.MS.B.BL	Bi-directional motion sensor - black	BM
2550.PA.O.SS	Narrow manual activation button - Push to Open - stainless steel	SS
2550.PP.L.PTO	Push pad activation button - Push to Open - stainless steel	SS
2550.PP.S.PTO	Push pad activation button - Slim - Push to Open - stainless steel	SS

### 121 – Light Duty Closers (Level 1)

The Briton 121 offers a compact, template adjustable or fixed power closer which is suitable for the most common door sizes. This cost effective closer solution exhibits the characteristics of performance, durability and quality that specifiers have come to expect from a Briton door control.

With simple, no nonsense installation, the Briton 121 comes with a screwthread armset as standard.

#### Mechanical hold-open unit

Mechanical hold-open is achieved by substituting the standard armset with a hold-open armset.



Adjustments: **1** - Template adjustable size 2-4 (Briton 121 only); **2** - Closing speed; **3** - Latch action

#### Principal Features & Benefits

- A** Pressure die cast aluminium body with sprayed paint finish with matching armset.
- B** Hardened and ground steel rack and pinion mechanism for smooth efficient operation.
- C** Screw thread armset manufactured from forged steel for additional strength and durability.
- D** Non handed design provides 180° opening / controlled closing.
- E** Optional arm bracket for parallel mounting application
- F** Optional hold-open armset (Not suitable for use on fire door applications)
- G** Available in 4 paint finishes

#### Fire Door Applications

Briton 121.SES is not suitable for use on fire doors. Please specify the Briton 121CE for fire door applications. Please note, the hold-open armset must not be used on fire door applications.

### 121 – Quick Selector

Product features		Product ref:	
EN Closer size	max. door size [width - weight]	121	121CE
1	750mm - 20kg		
2	850mm - 40kg	■	
3	950mm - 60kg	■	■
4	1100mm - 80kg	■	
5	1250mm - 100kg		
6	1400mm - 120kg		
CE marked			■
Template adjustable EN size		2 - 4	
Fixed closing power EN size			3
Maximum angle of opening (controlled closing)		180°	180°
Adjustable closing speed & latch action		■	■
Adjustable backcheck			
Standard armset for regular and transom mounting		■	■
Armset and bracket for parallel mounting		□	□
Mechanical hold-open facility*		□	□
Cover variants available		No	No
Guarantee period		10yrs	10yrs
CE Classification		4 8 3 1 1 3	

■ Feature as standard    □ Available as an option

#### Testing & Certification

CE marked to EN1154 - AD0248 (Briton 121CE only)

Fire tested to EN1634 on timber doors to achieve a 2 hour fire rating

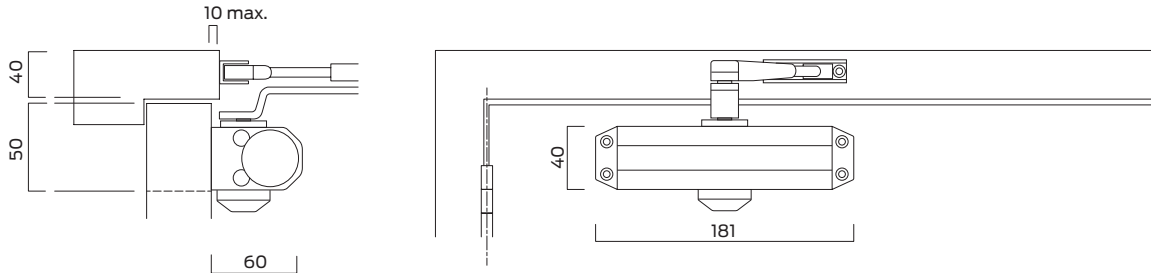
Certifire Approved CF390

Full Declaration of Performance available from our website at: [www.britondops.co.uk](http://www.britondops.co.uk)



**What's in the box?**

- Closer Body
- Tri-Pack Armset and Brackets
- Fixing Pack
- Installation Instructions



Product Ref:	Description	Mounting Option	Finishes
121	Template adjustable closer EN 2-4	Regular and Transom mount	
121CE	Electromagnetic hold-open/swing-free closer - fixed power EN3	Regular and Transom mount	BES; GES;
121.APH	Electromagnetic hold-open/swing-free closer - fixed power EN4	Regular, Transom & Parallel	SES; WHS;
121.BRK66.BE	Fig 66 armset and bracket for Briton 121	Parallel mount	

131 – Light Duty Closers (Level 1)

The Briton 131 offers a compact, template adjustable power closer which is suitable for the most common door sizes.

With simple, no nonsense installation, the Briton 131 comes with screwthread armset and brackets certified for regular or parallel mounted applications.

The Briton 131 can be retrofitted to two size 3 positions.

Mechanical hold-open unit

Mechanical hold-open is achieved by substituting the standard armset with a hold-open armset.



Principal Features & Benefits

- A

Cast aluminium body with sprayed paint finish with matching armset.
- B

Steel screw thread armset provides simple installation and adjustment
- C

Non handed design provides 180° opening / controlled closing (see table opposite).
- D

Optional arm bracket for parallel mounting application
- E

Pinion cover cap
- F

Optional hold-open armset (Not suitable for use on fire door applications)
- G

Available in sprayed silver and other RAL colours to special order

Adjustments

- 1

Template adjustable power  
Adjustable for 2 - 4 (refer to table opposite)
- 2

Adjustable closing speed  
Adjustable from 180° opening (mounting dependant)through to the final 15°
- 3

Adjustable latch action  
The speed of closing in the last 15° to overcome seals and latches

131 – Quick Selector

Product features		Product ref:
EN Closer size	max. door size [width - weight]	131
1	750mm - 20kg	
2	850mm - 40kg	
3	950mm - 60kg	
4	1100mm - 80kg	
5	1250mm - 100kg	
6	1400mm - 120kg	
CE marked (see table below)		
Adjustable closing speed & latch action		
Standard armset for regular and transom mounting		
Armset and bracket for parallel mounting		
Mechanical hold-open facility		
Cover variants available		No
Guarantee period		10yrs

■ Feature as standard    □ Available as an option

Mounting	Power size	Max. door opening	EN Classification
Regular mount Fig.1	2	180°	3 8 2-4 1 1 3
	3	180°	
	4	105°	
Parallel mount Fig.66	3	160°	3 8 3 1 1 3
	2	180°	
	3	180°	
Transom mount	3	180°	Not CE marked
	4	105°	

Testing & Certification

CE marked to EN1154 - AD5311

Fire tested to EN1634 on timber doors to achieve a 2 hour fire rating, and 4 hours for metal doors.

Certifire Approved CF5512

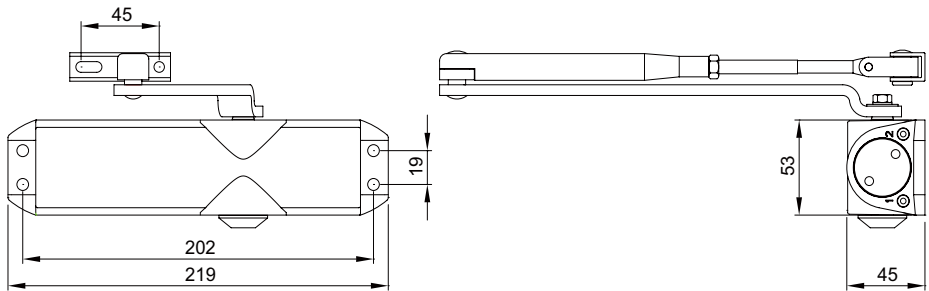
Full Declaration of Performance available from our website at:

[www.britondops.co.uk](http://www.britondops.co.uk)



What's in the box?

- Closer Body
- Tri-Pack Armset and Brackets
- Fixing Pack
- Installation Instructions



Product Ref:	Description	Mounting Option	Finishes
131.SES	Template adjustable closer EN 2-4	Regular and Transom mount	SES; RAL colours to order
131.APH.SE	Hold open arm pack for Briton 131	Regular and Transom mount	



Door Closers – A Guide to Finishes

Allegion door closers are available in a selection of powder coated, polished or plated metal finishes. Where different materials are used in manufacture they may have a plated finish to match the specified finish (e.g a product with a satin stainless steel finish may include one or more components with a satin nickel plated finish to produce a close match).



- Metallic Finishes**
- .SE Powder coated metallic silver
  - .BE Powder coated metallic brown
  - .GE Powder coated metallic gold
  - .WH Powder coated white
  
  - .SS Satin stainless steel
  - .PS Polished stainless steel
  - .PB Polished brass

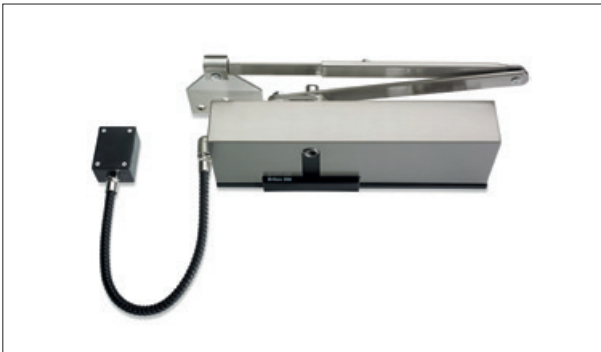


Finishes from top row (left to right):  
SES & BES  
GES & WHS  
SSS & PSS  
PBS  
(illustrated on Briton 2720 with Slimline cover)

Matching armsets

All finishes have a 2 digit code - e.g. SE, PS etc. In most cases, closer bodies and armsets are supplied with the same finish and the finish code has an additional suffix 'S' - e.g. SES, PSS etc.

Closers which are not supplied with a matching armset have a black powder coated armset. This applies only to the Briton 996 Series.



Briton 9963/66.SSS



Briton 9963.SE

Coloured finishes

Closers are also available in a range of powder coated solid colours which are designed to match closely to the solid nylon colours of our Normbau range of hardware.

We have NCS and closest RAL references for each colour if required.

Normbau colours

- |   |   |   |   |   |
|---|---|---|---|---|
|  |  |  |  |  |
| 16<br>Black   | 19<br>White   | 67<br>Manhattan   | 18<br>Dk Grey   | 11<br>Blue  |
|  |  |  |  |  |
| 37<br>Dk Blue   | 63<br>Slate Blue  | 12<br>Red   | 22<br>Yellow  | 13<br>Green   |

Please note, these colours are shown for general identification purposes only. Due to printing limitations we recommend you check colours against Normbau colour samples available on request.

500 Series - Electromagnetic Door Holders

When used in conjunction with a suitable door closing device, fire alarm and detection system, the Briton electromagnetic hold open devices permit fire doors to be held open during normal operation. In the event of a fire or smoke detection, the units are automatically de-activated and the doors will close under the normal action of the door closer.



- 503
- Contract electromagnetic hold-open unit
  - Surface mounted
  - White plastic housing
  - Built-in release/test button



- 533
- Specification electromagnetic hold-open unit
  - Flush or surface mounted
  - Metal housing available in a range of metallic and powder coated finishes
  - Built-in release/test button

500 Series - Door Holders & Accessories

A series of accessories is available for use with Briton electromagnetic hold-open devices, including Briton electromagnetic hold-open door closers.



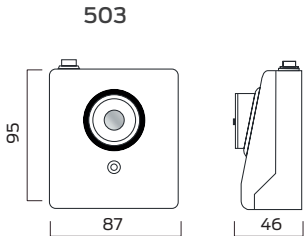
533FMB



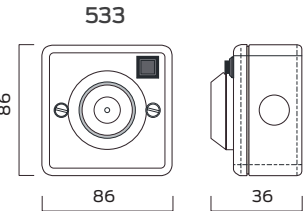
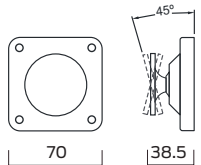
533.C

Product Ref:	Description	Finishes
503	Contact wall magnet - surface mounted	WHS
533	Specification wall magnet - c/w flush mount back box	SE; SS

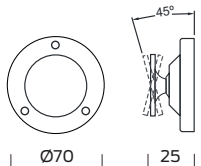
Product Ref:	Accessories	Finishes
533FMB	Floor mounting bracket suitable for 503 & 533 magnets	WHS; SE; SS
533.C	Cover to convert 533 magnet for surface mounting	SE; SS



503



533



Units are ideally located in close proximity to the door closer to minimise the possibility of twisting the door.

Testing & Certification

CE marked to EN1155 - AE0009 (Briton 503)  
- AE0010 (Briton 533)  
Fire tested to EN1634 on timber doors to achieve a 2 hour fire rating.  
Full Declaration of Performance available from our website at:  
[www.britondops.co.uk](http://www.britondops.co.uk)



What's in the box?

- Wall mounted magnet
- Back box
- Fixing Pack
- Installation Instructions

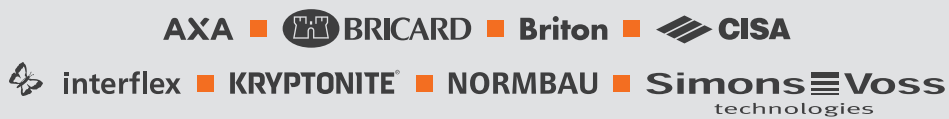
Cl/Sfb	(31.59)	X	
Uniclass	L4181		

July 2018

## About Allegion

Allegion (NYSE: ALLE) is a global pioneer in safety and security, with leading brands like CISA®, Interflex®, LCN®, Schlage® and Von Duprin®. Focusing on security around the door and adjacent areas, Allegion produces a range of solutions for homes, businesses, schools and other institutions. Allegion is a \$2.4 billion company, with products sold in almost 130 countries.

For more, visit [allegion.com](http://allegion.com)



## Allegion (UK) Limited

35 Rocky Lane  
Aston  
Birmingham  
B6 5RQ

Tel: +44 (0) 121 380 2400  
Email: [contactuk@allegion.com](mailto:contactuk@allegion.com)  
Web: [allegion.co.uk](http://allegion.co.uk)